

**Summary of Key Briefing Points**  
**1030-1130am MST FRI February 5, 2016**

# Current Conditions as of FRI 12Z-15Z February 5

## Tropics and Mid-latitudes

### *Over the Tropical Pacific:*

- Convection: A narrow zonal band of convection 3-4N in Mission domain 153W-160W this morning.
- An area of active Convection in region 170W-160W, 1-7°N this morning.
- An area of active convection in region 170W-180W, 0-12s this morning
- Westerly upper level flow to south of equator, 155-130W,
- Water vapor image at 14Z Fri shows dry intrusion to 160W-140W, 0-10N band
- For the Pacific as a whole, The major convection is located near the I.D.

# Tropical Outlook

- Convection for Fri mostly quiet in Flight domain, though there is a morning band in the center of our FD
- By 00Z SUN 7 FEB (Sat aftn HNLT), some convection expected in FD  
----- Low confidence on the expected location of active convection in FD....disagreement between EC/GFS

*--- in summary, the indication from THU forecasts is for Convection to be reduced considerably by THU and FRI, and still quite limited on Sat, likely of a more isolated character in FD*

# Midlatitude Conditions/Outlook

## Short Term:

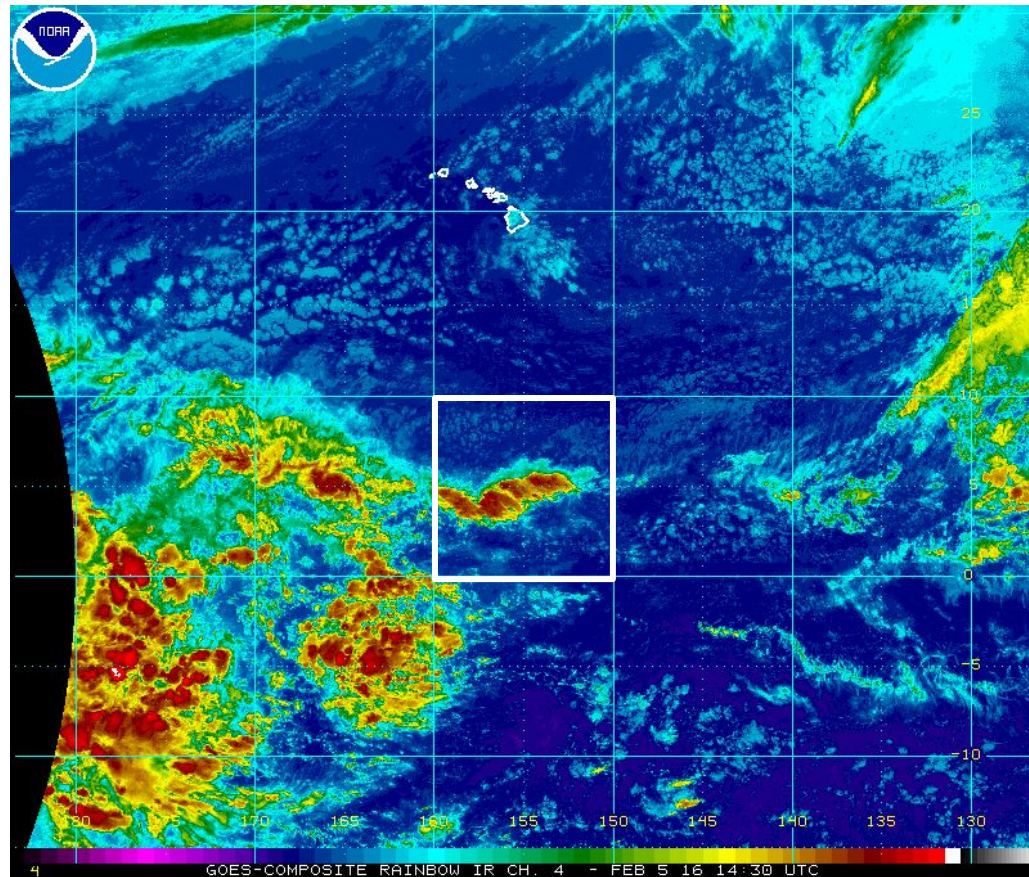
- CA mostly quiet
- Weak frontal rains in north mid-week, otherwise dry
- 8-station NSierra index on 31 Jan is 121%, 5-station CSierra index is 124%, Tulare Basin Index: 128%

## Medium - Long Term:

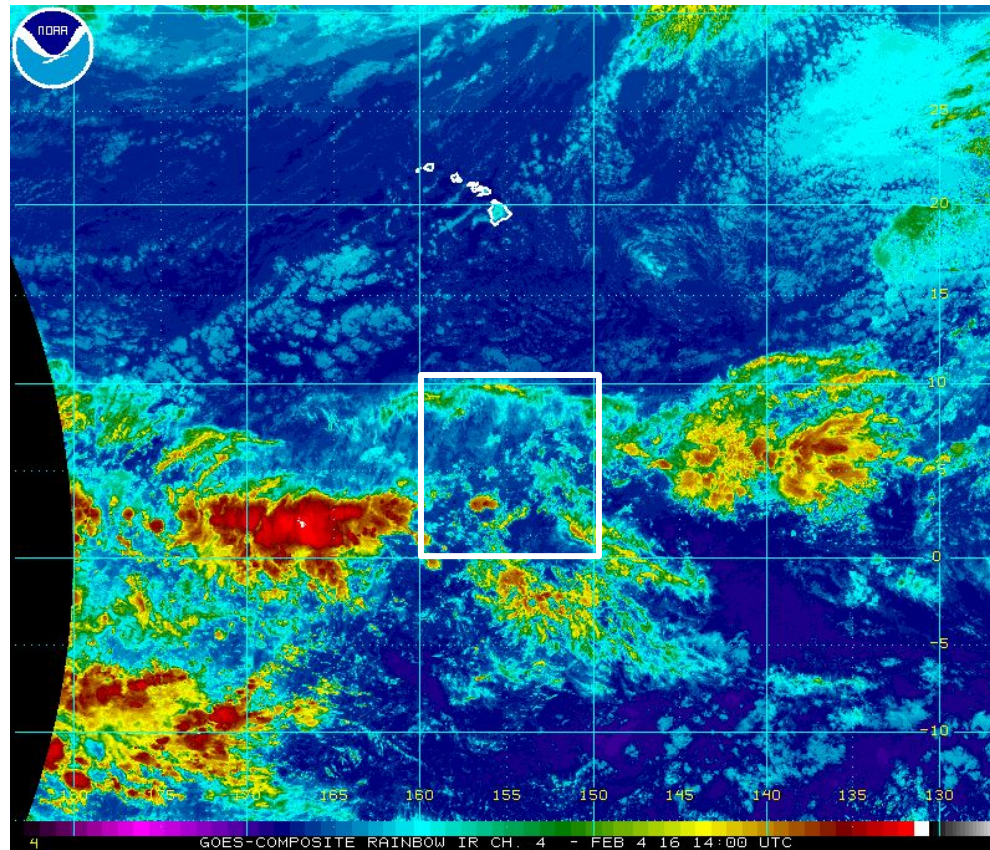
- Day 0-7 accumulated pcpn for CA shows little pcpn
- CPC 6-10 day (Feb 7-11) pcpn probabilities have high probabilities of below normal statewide
- Days 7 -10 fcsts from 00 TUE 2 Feb runs indicate sharp WCOAST Ridge  
----confidence high (strong model agreement) that Tue 9 Feb thru Fri 12 Feb to be quiet in CA and NE Pacific
- Day 8-15 Calibrated Pcpn for CA (00Z Mon fcst) indicates a change, with above normal risks for >2" rainfall in region from SFO to SAN.  
--- confidence low given poor model performance in prior long lead predictions.



# FRI 1430Z February 5 Enhanced IR Image

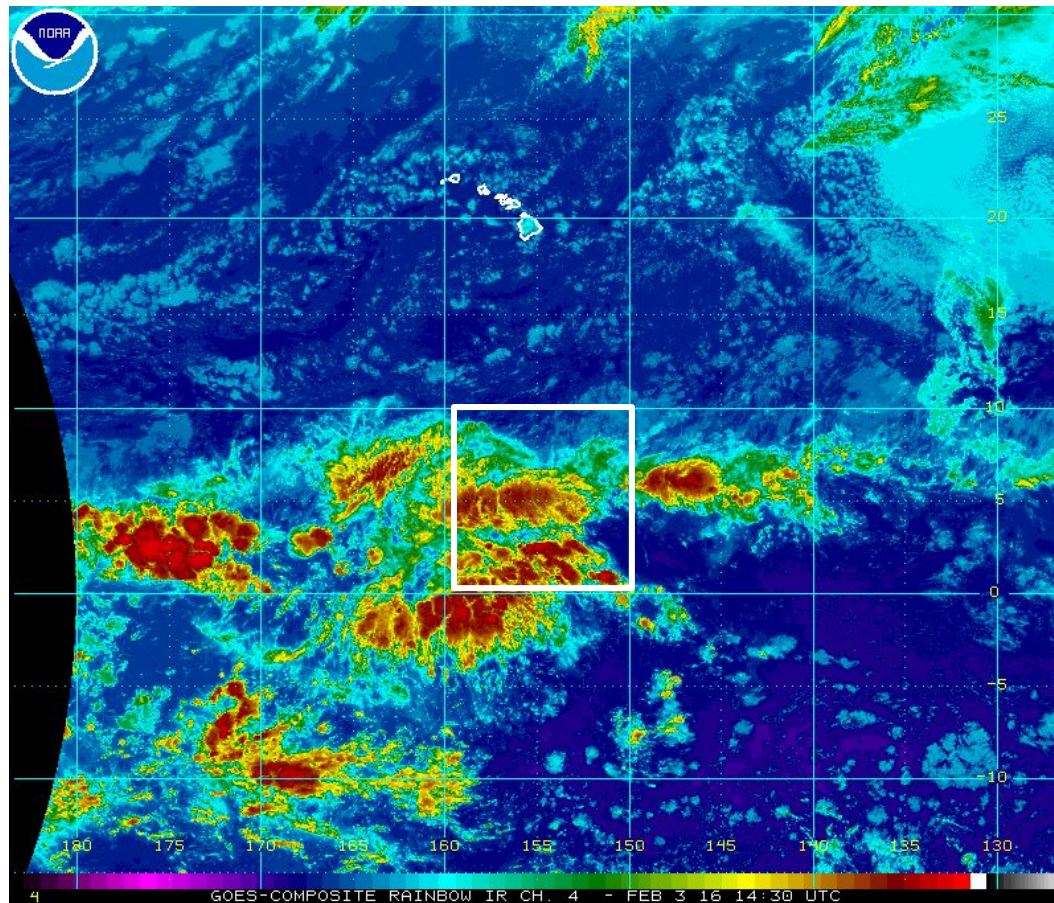


# THU 14Z February 4 Enhanced IR Image

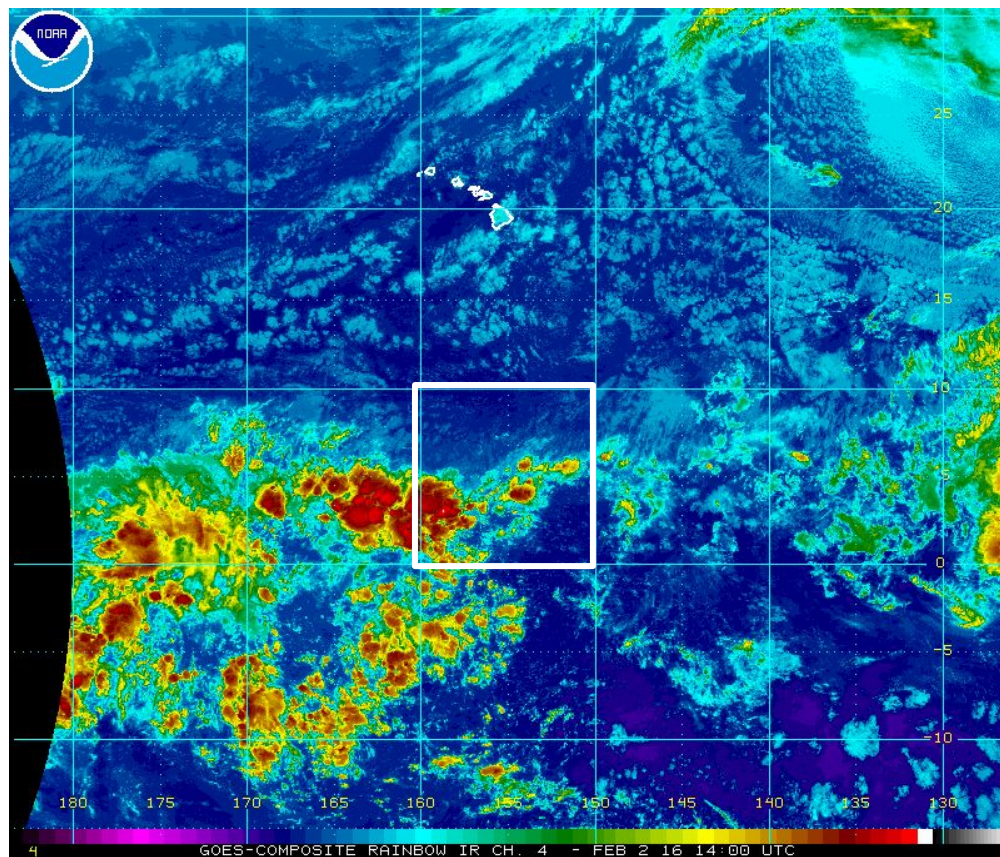




# Wed 1430Z February 3 Enhanced IR Image

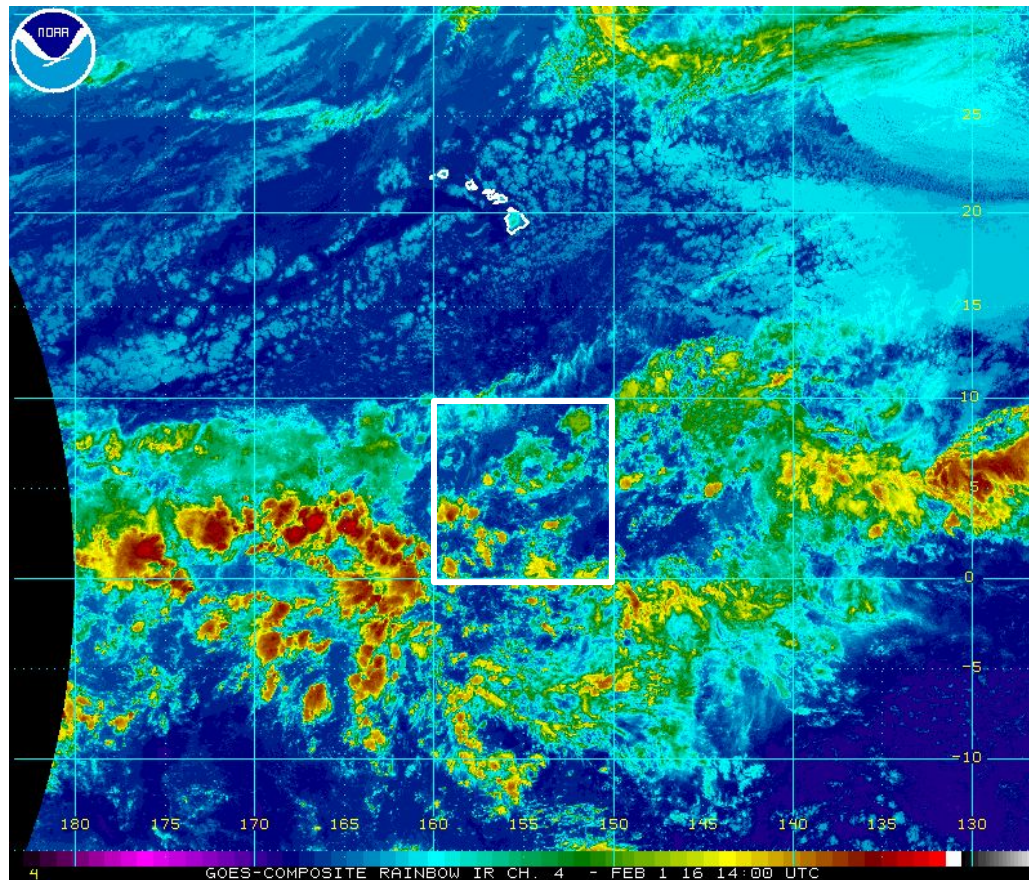


## Tuesday 14Z February 2 Enhanced IR Image

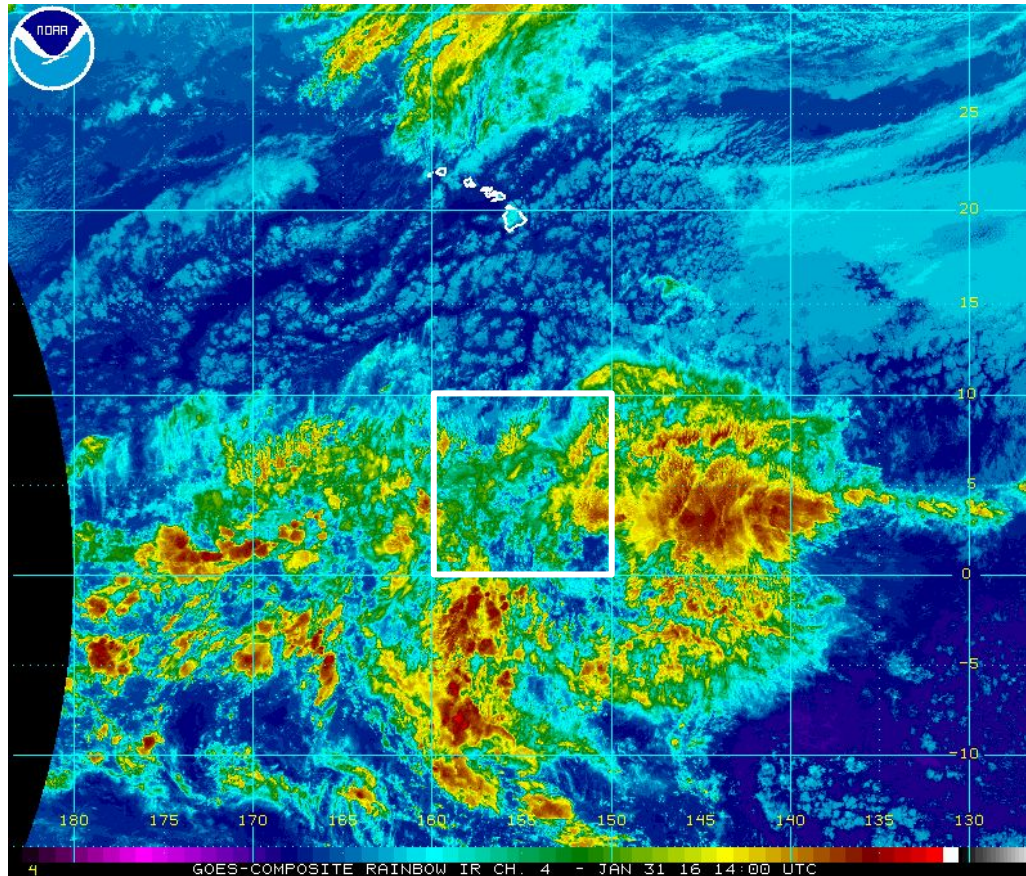




# Monday 14Z February 1 Enhanced IR Image

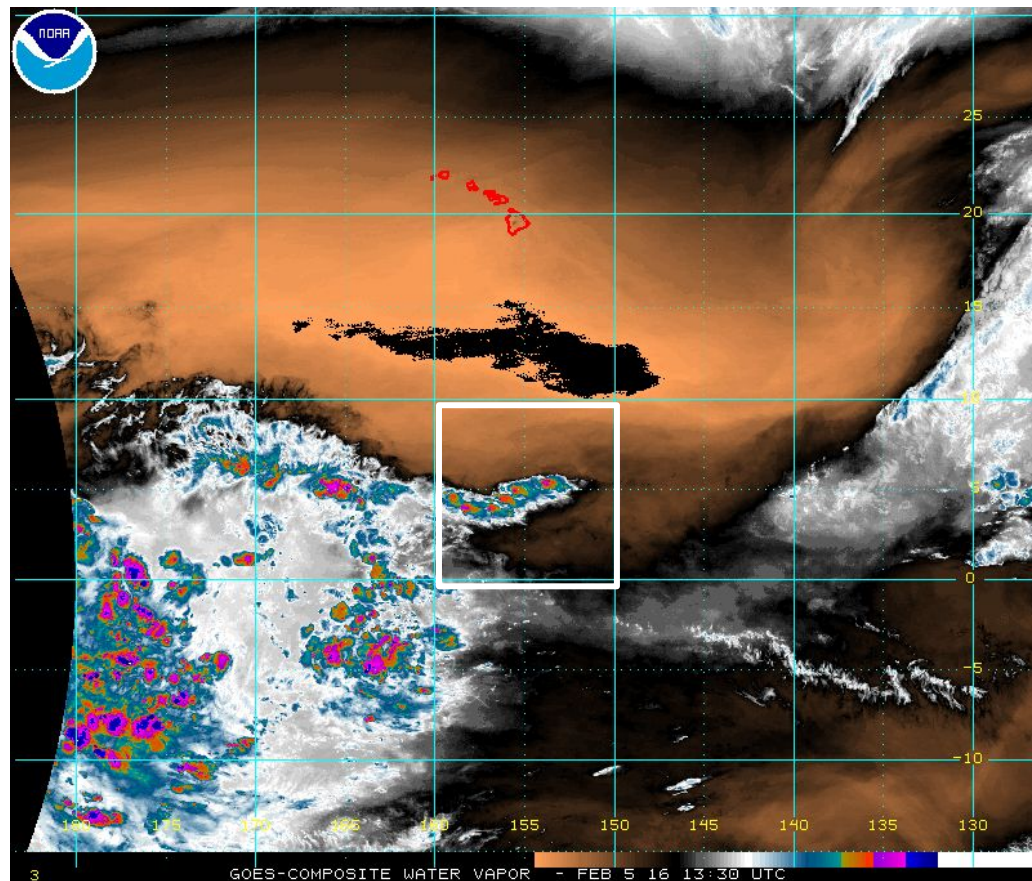


## Sunday 14Z January 31 Enhanced IR Image

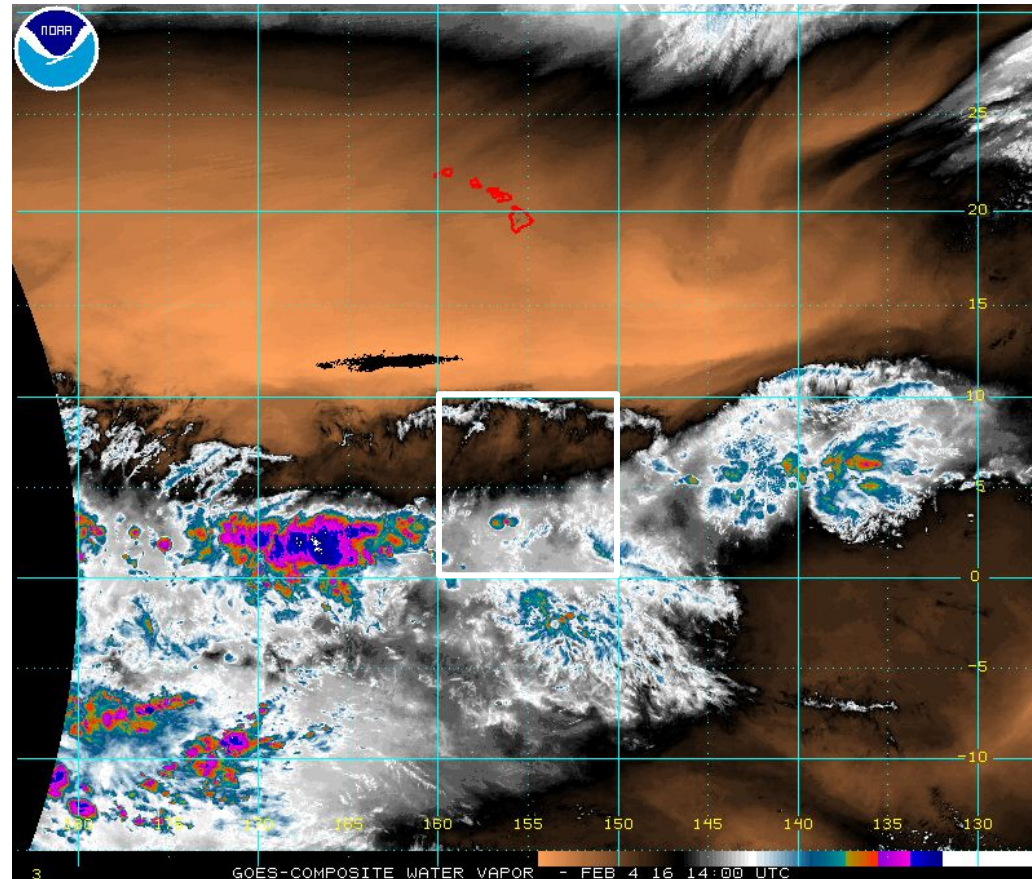




## FRI 14Z February 5 Water Vapor

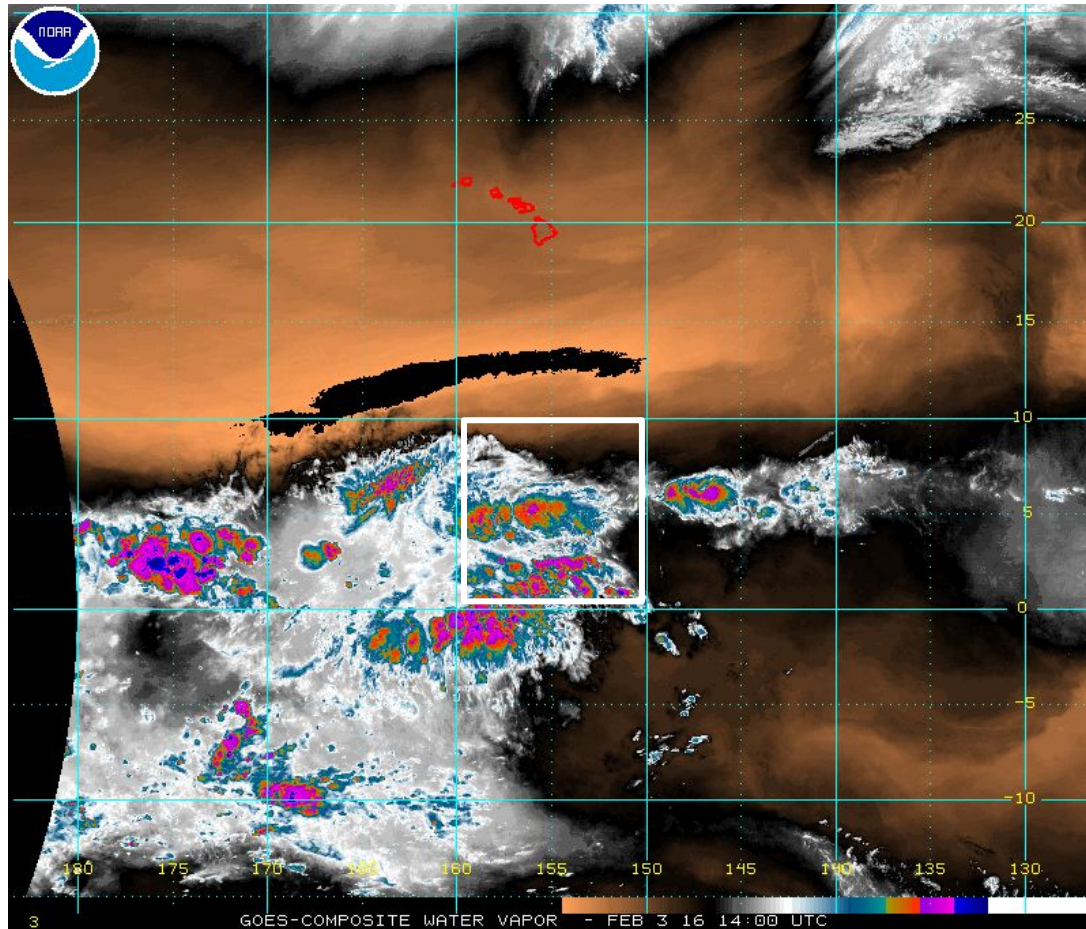


## Thu 14Z February 4 Water Vapor

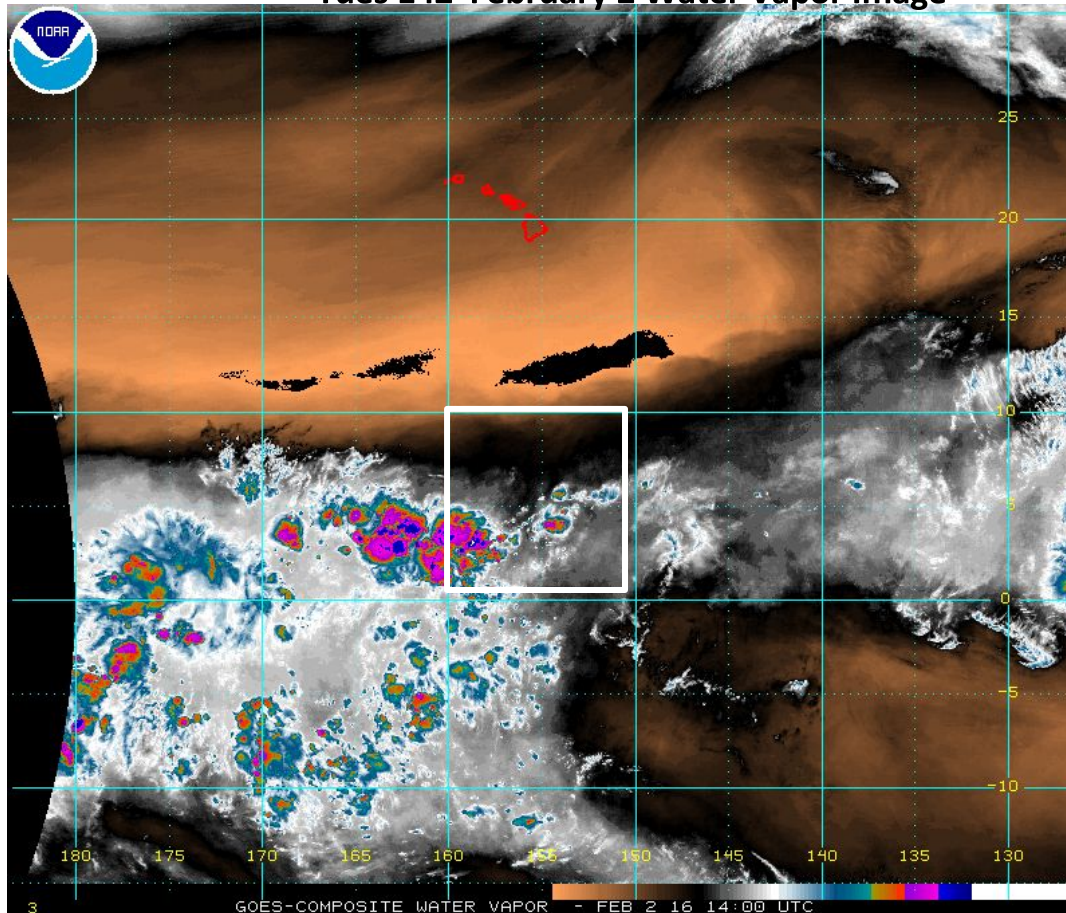




## Wednesday 14Z February 3 Water Vapor

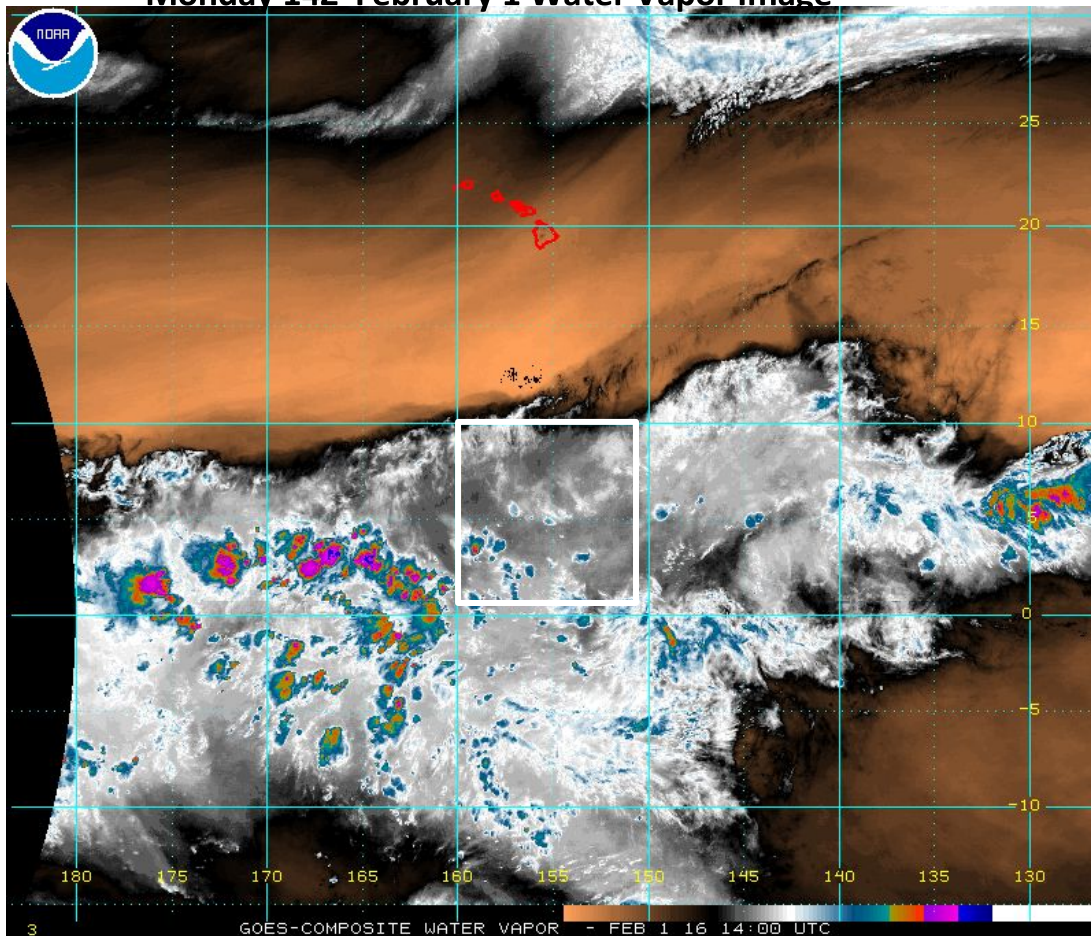


## Tues 14Z February 2 Water Vapor Image

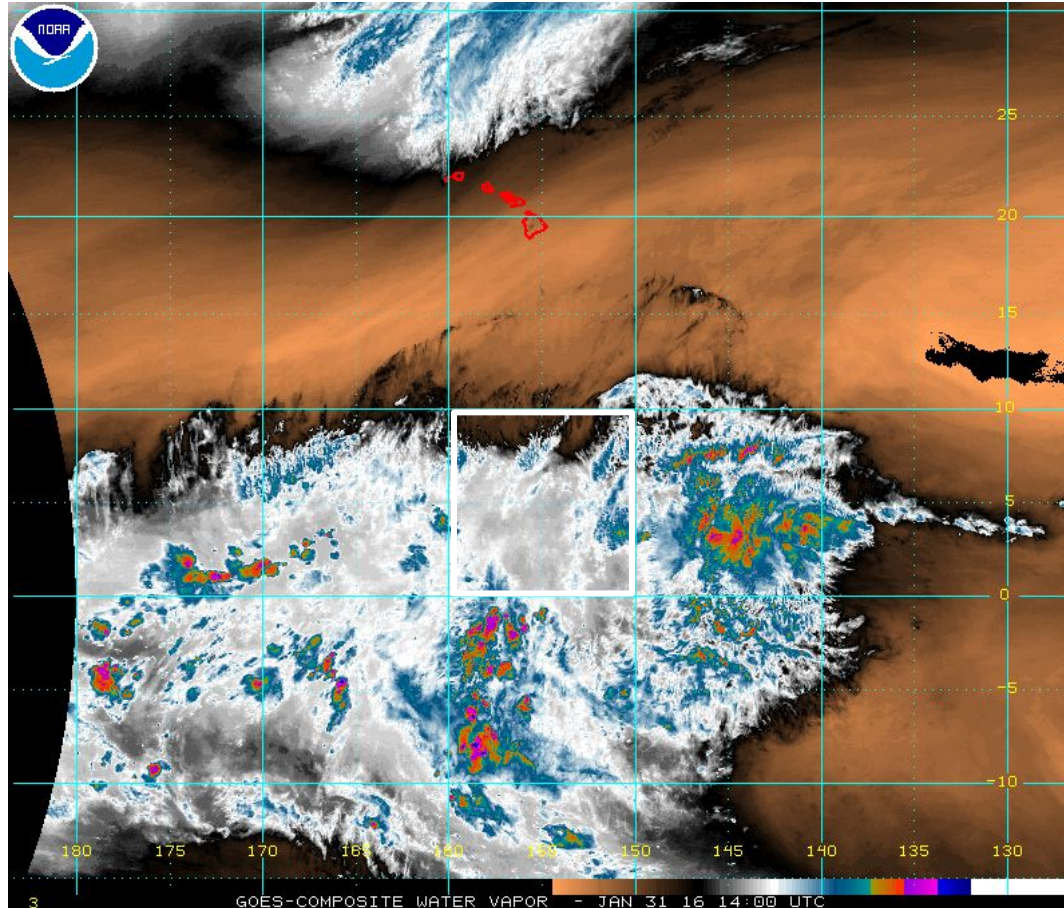




# Monday 14Z February 1 Water Vapor Image

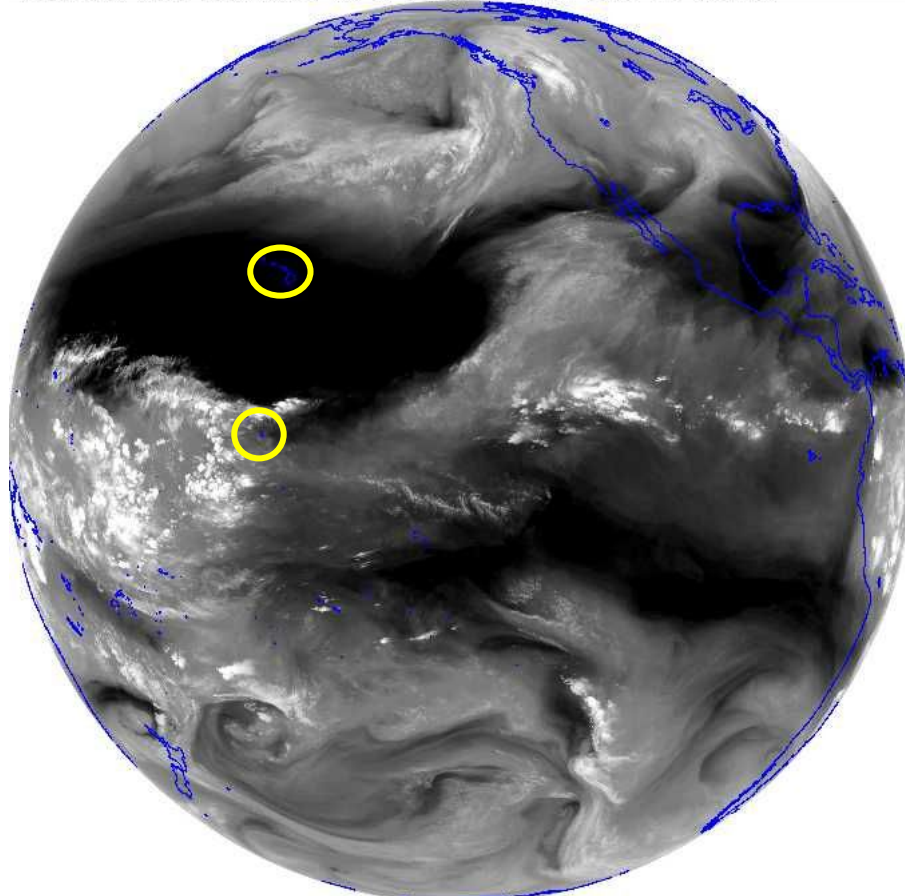


## Sunday 14Z January 31 Water Vapor Image



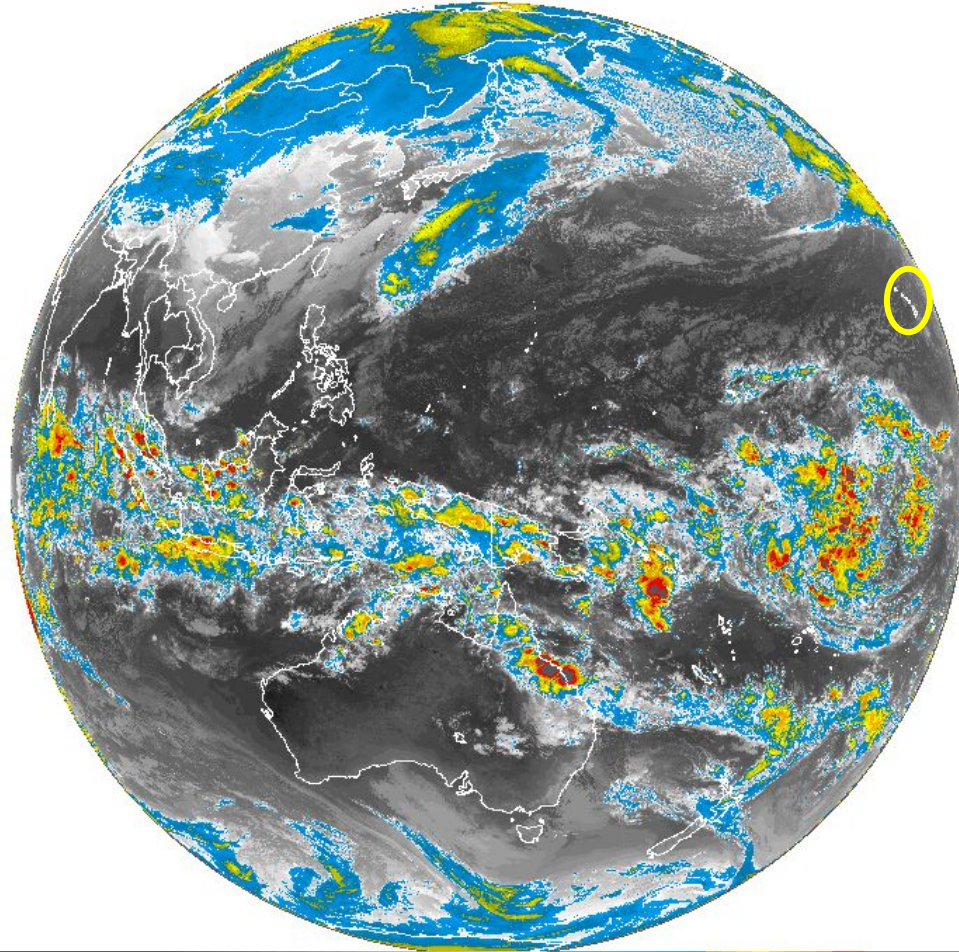
# FRI 12Z February 5 GOES West Water Vapor Image

GOES WEST FULL DISK WATER VAPOR 5 FEB 16 12:00 SSEC: UW-MADISON





FRI 14Z February 5 GOES West Pacific



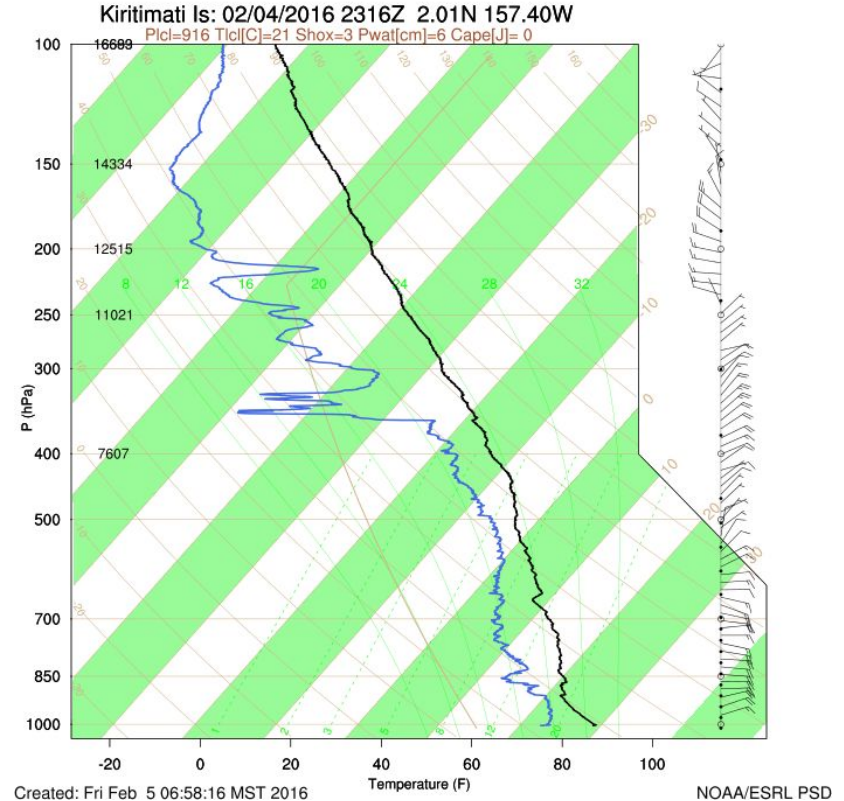
## 630 am email from CXI:

“Clear with lots of stars at launch. Still hot and humid, though not as hot as during day. Sounding showed dry air aloft, which is why the stars are so bright.”

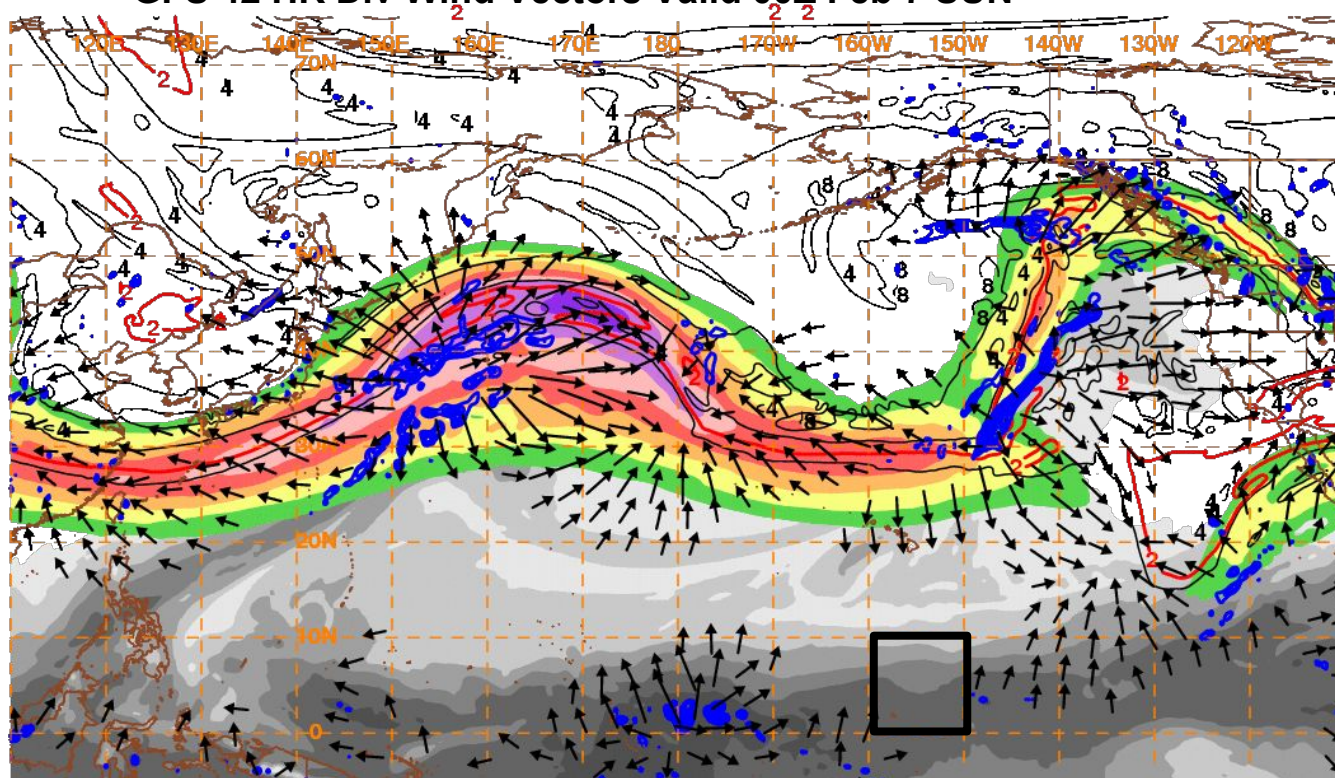
Paul

--

Paul E Johnston



# GFS 42 HR Div Wind Vectors Valid 00Z Feb 7 SUN

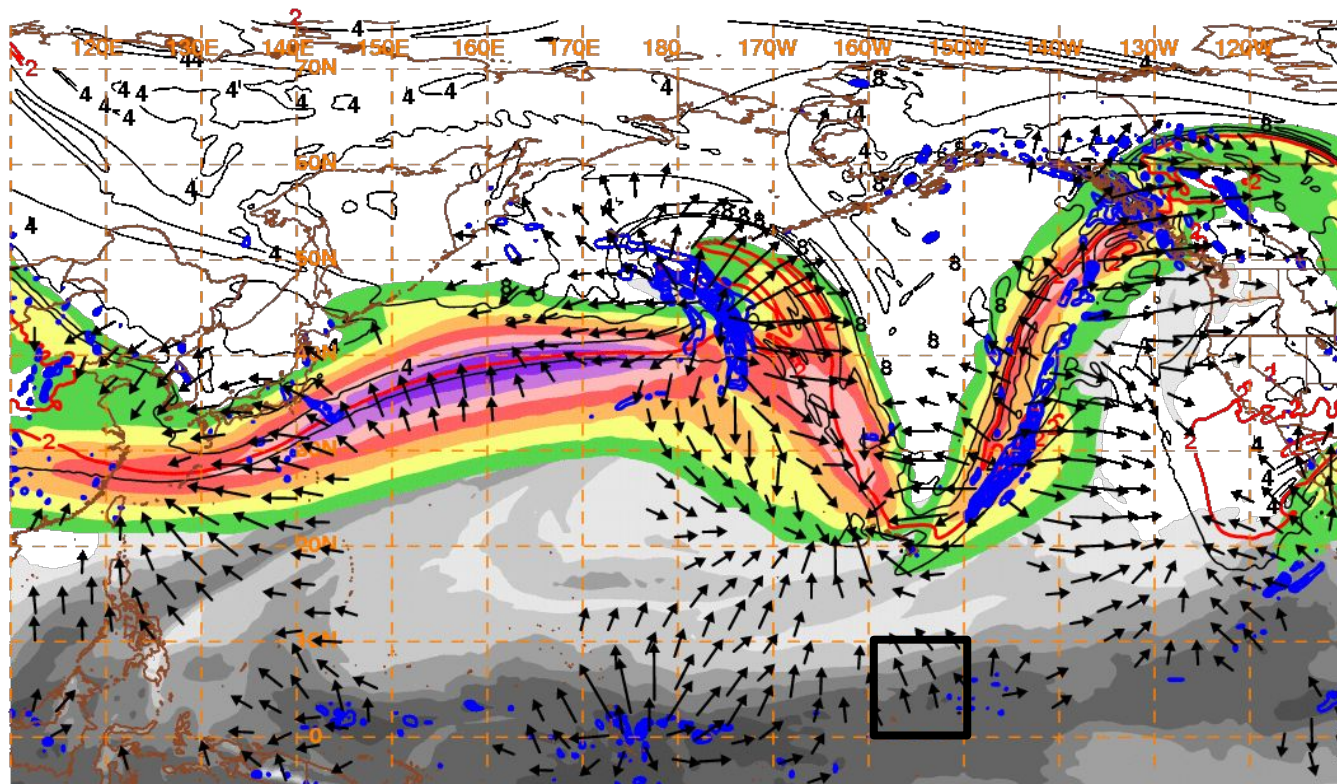


10 m/s → **160207/0000V042 PW, 250 hPa Isotachs, PV, Irr. Wind, 500 hPa Upward Vert. Vel**





# GFS 66 HR FCST Valid 00Z MON Feb 8: 200 mb DIV Wind Vectors

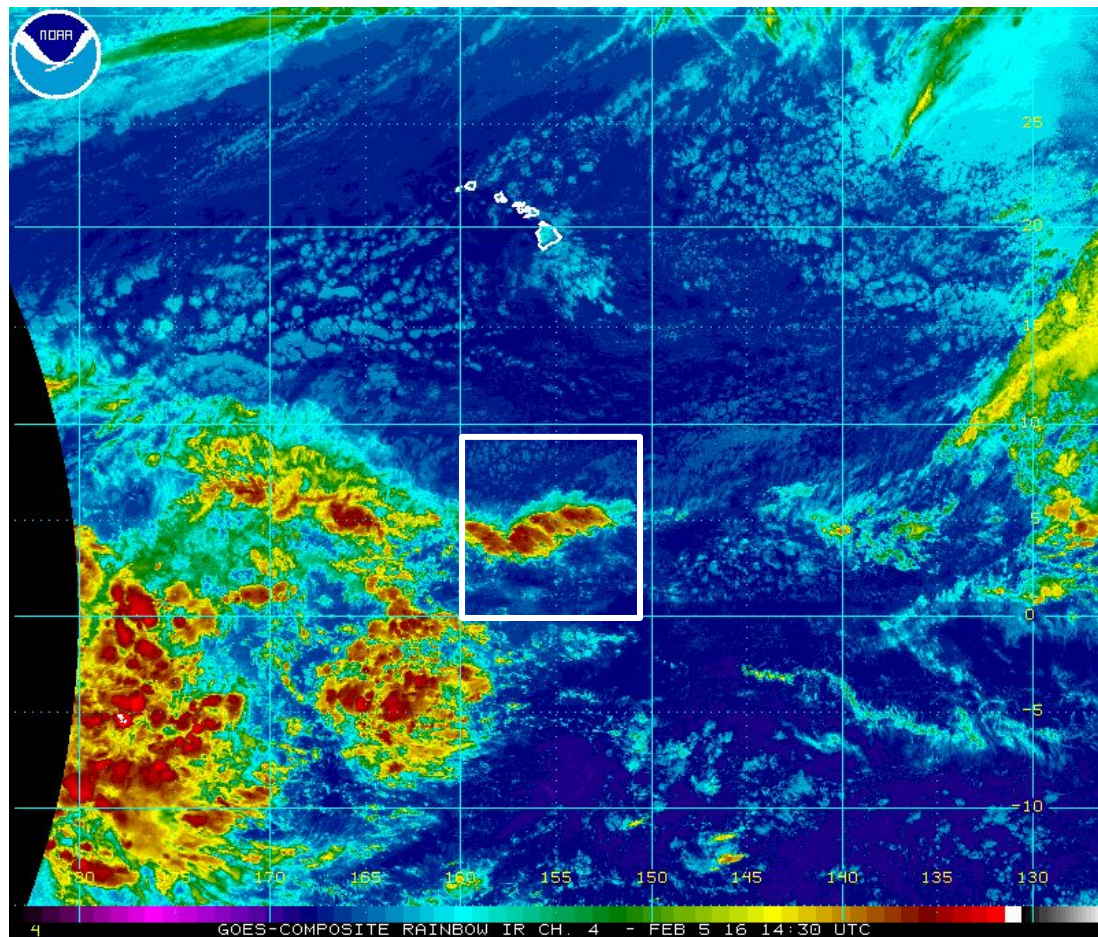


10 m/s → **160208/0000V066 PW, 250 hPa Isotachs, PV, Irr. Wind, 500 hPa Upward Vert. Vel**

40 50 60 70 80 90 100

15 25 35 45 55 65

# FRI 1430Z February 5 Enhanced IR Image

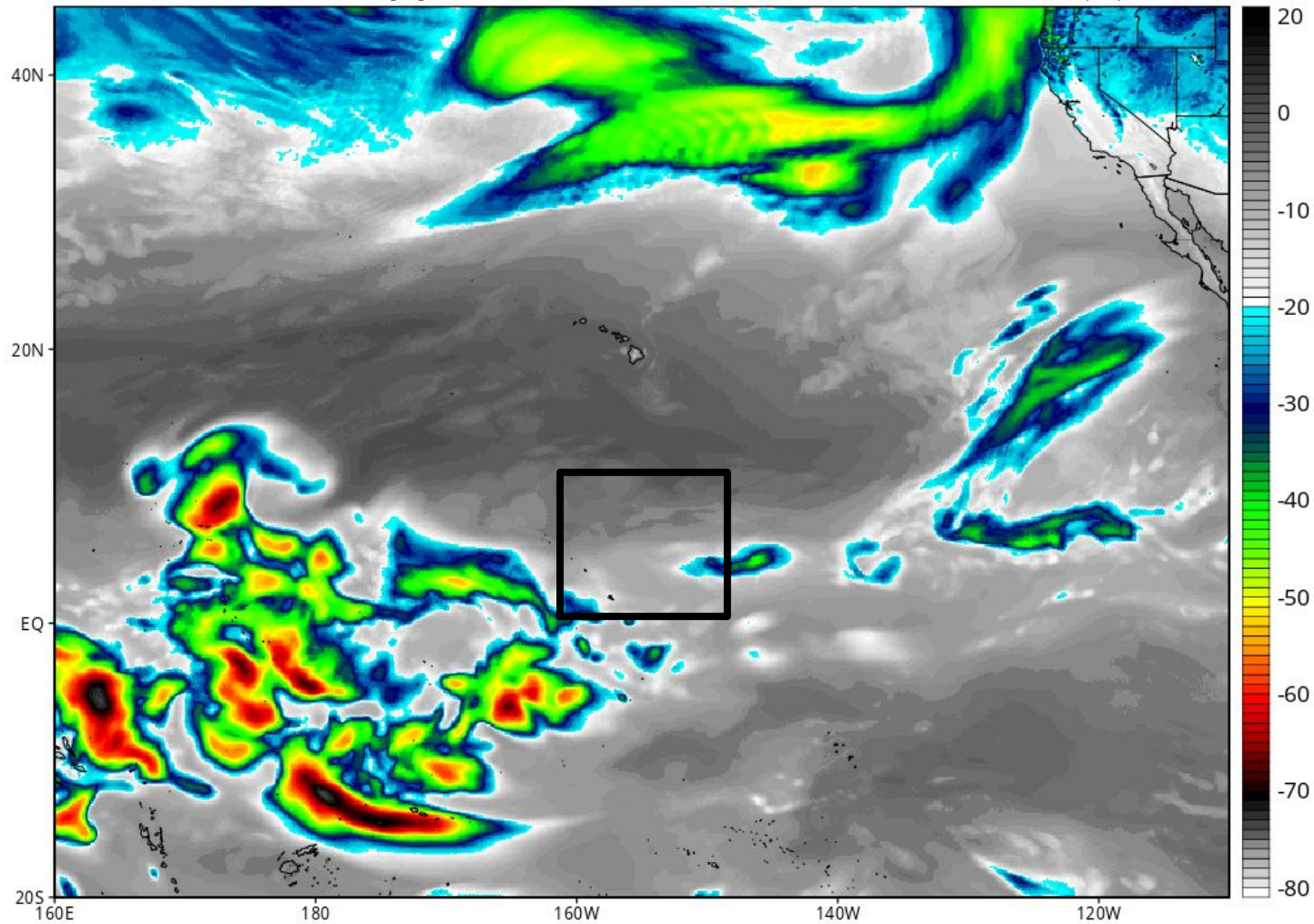




# GFS Simulated IR Brightness Temperature (°C)

Init: 12z Feb 04 2016 Forecast Hour: [30] valid at 18z Fri, Feb 05 2016

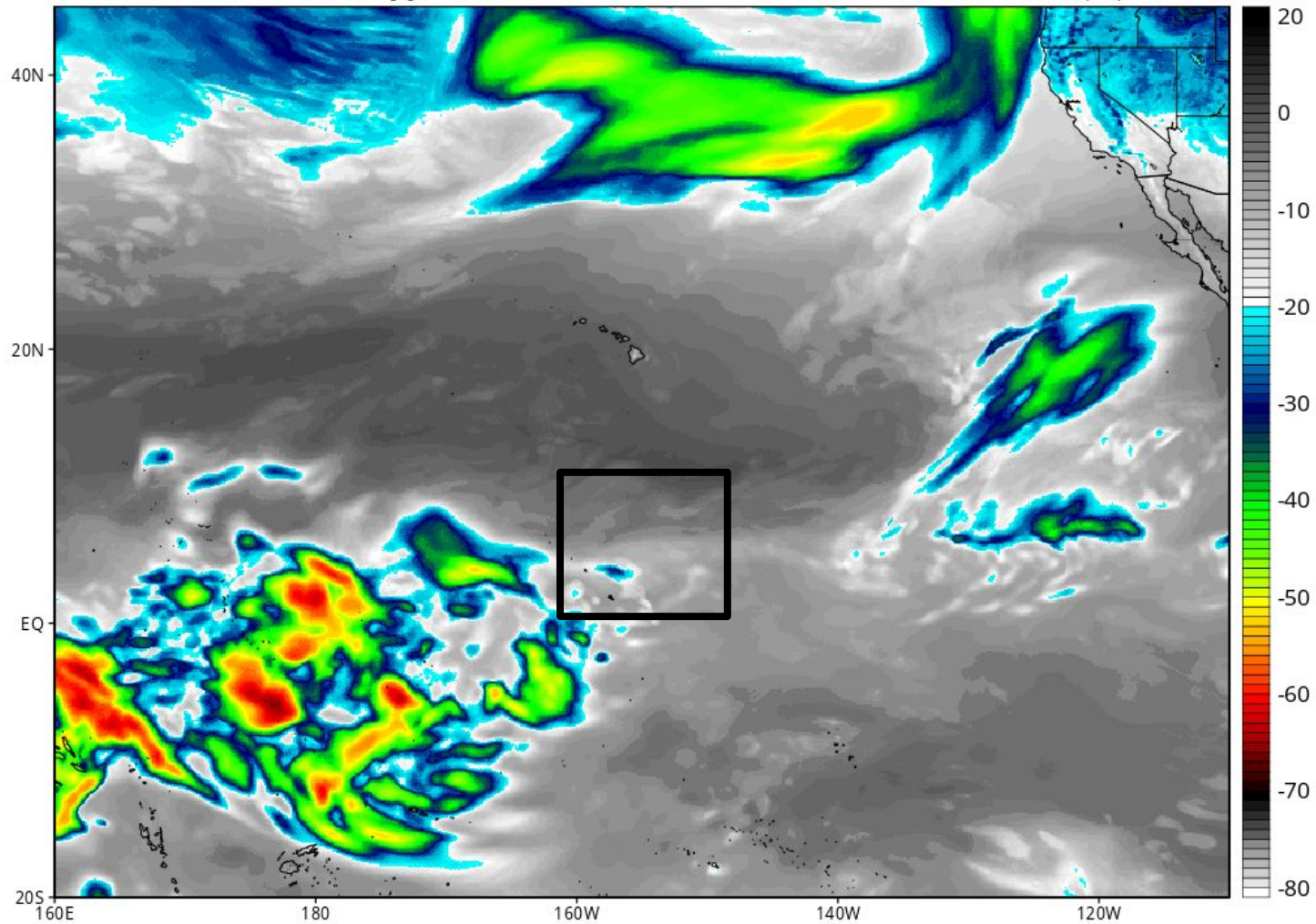
Levi Cowan | [tropictidbits.com](http://tropictidbits.com)



# GFS Simulated IR Brightness Temperature (°C)

Init: 12z Feb 05 2016 Forecast Hour: [6] valid at 18z Fri, Feb 05 2016

Levi Cowan | [tropicaltidbits.com](http://tropicaltidbits.com)

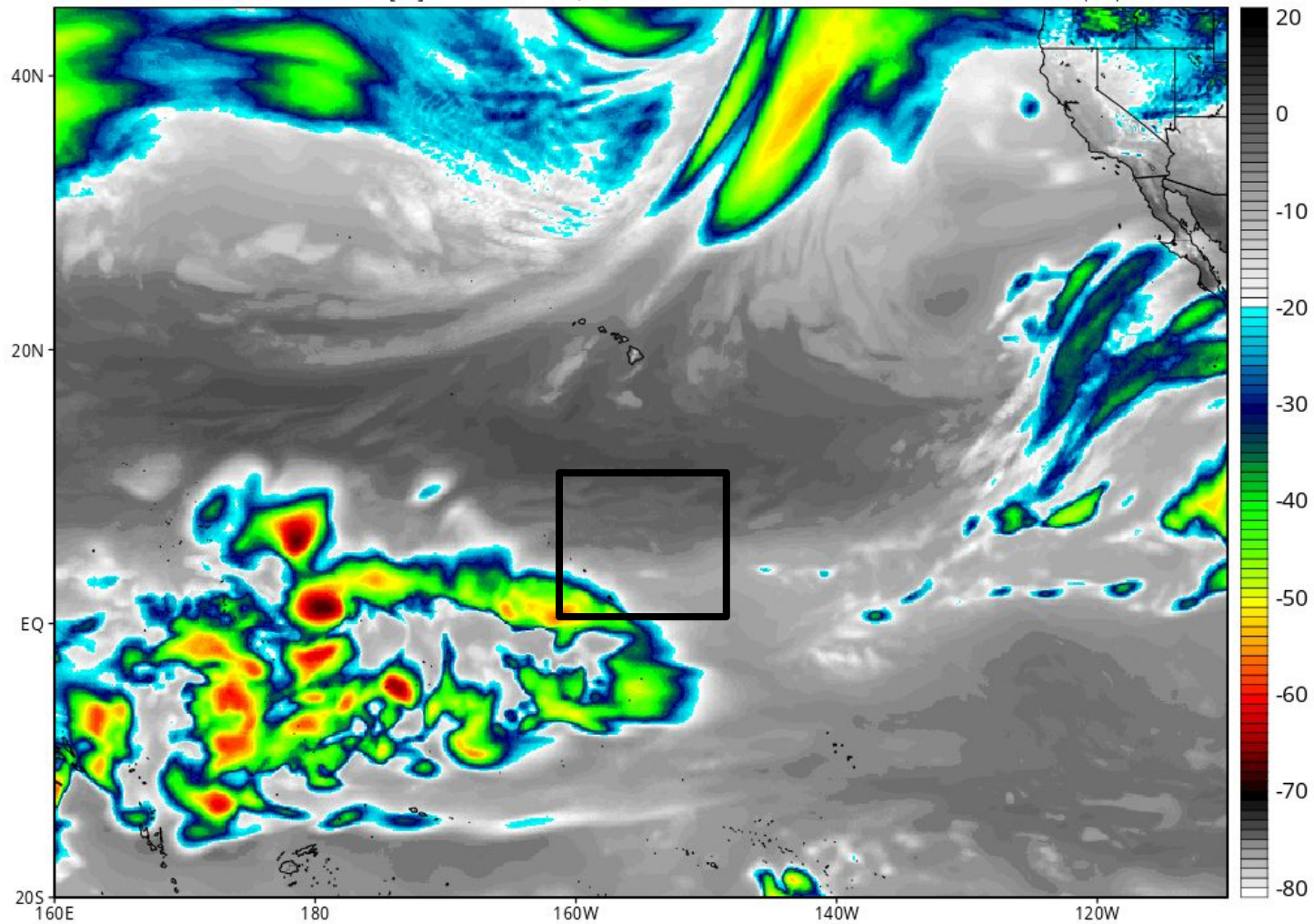




# GFS Simulated IR Brightness Temperature (°C)

Init: 12z Feb 05 2016 Forecast Hour: [36] valid at 00z Sun, Feb 07 2016

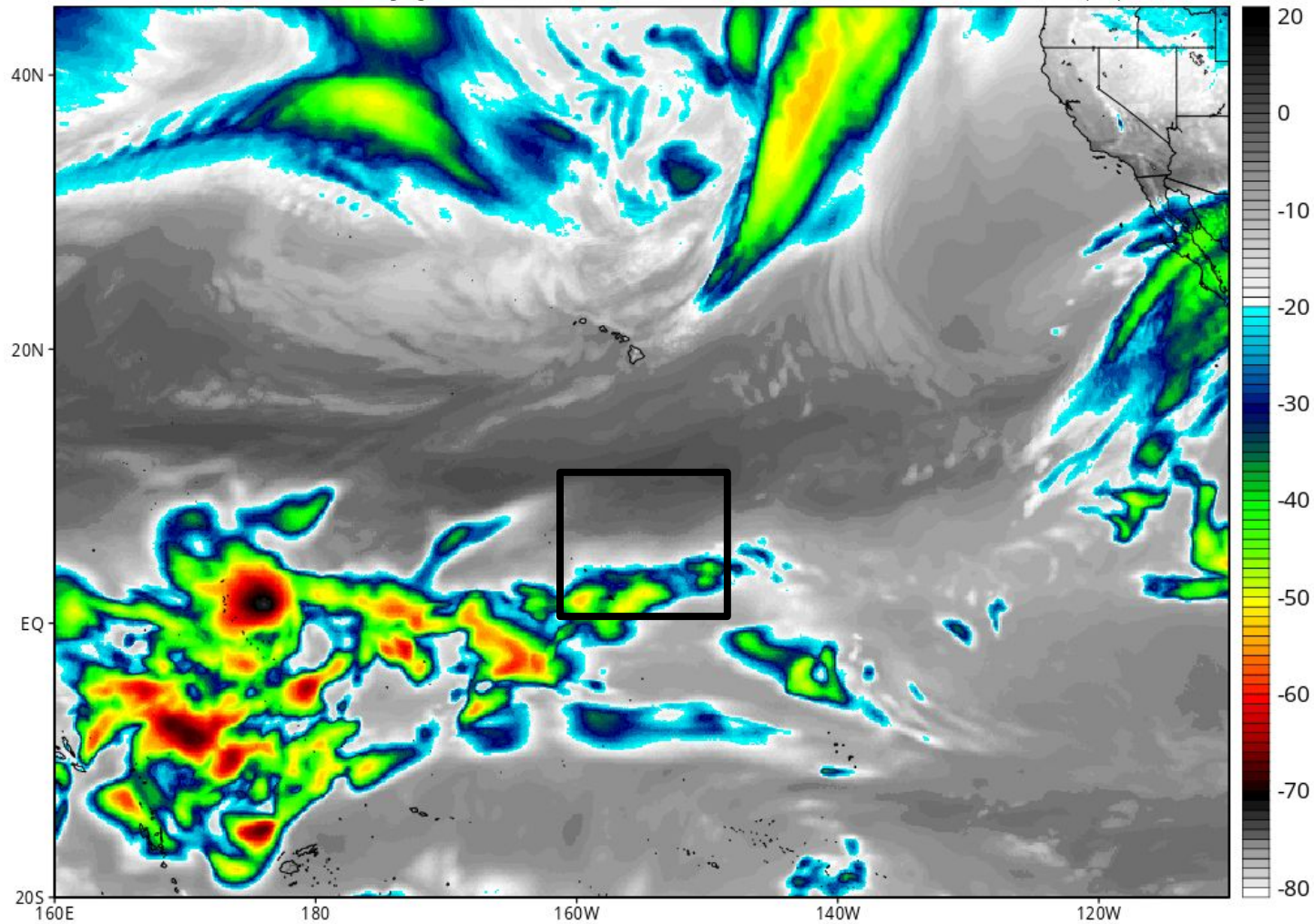
Levi Cowan | [tropicaltidbits.com](http://tropicaltidbits.com)



# GFS Simulated IR Brightness Temperature (°C)

Init: 12z Feb 05 2016 Forecast Hour: [60] valid at 00z Mon, Feb 08 2016

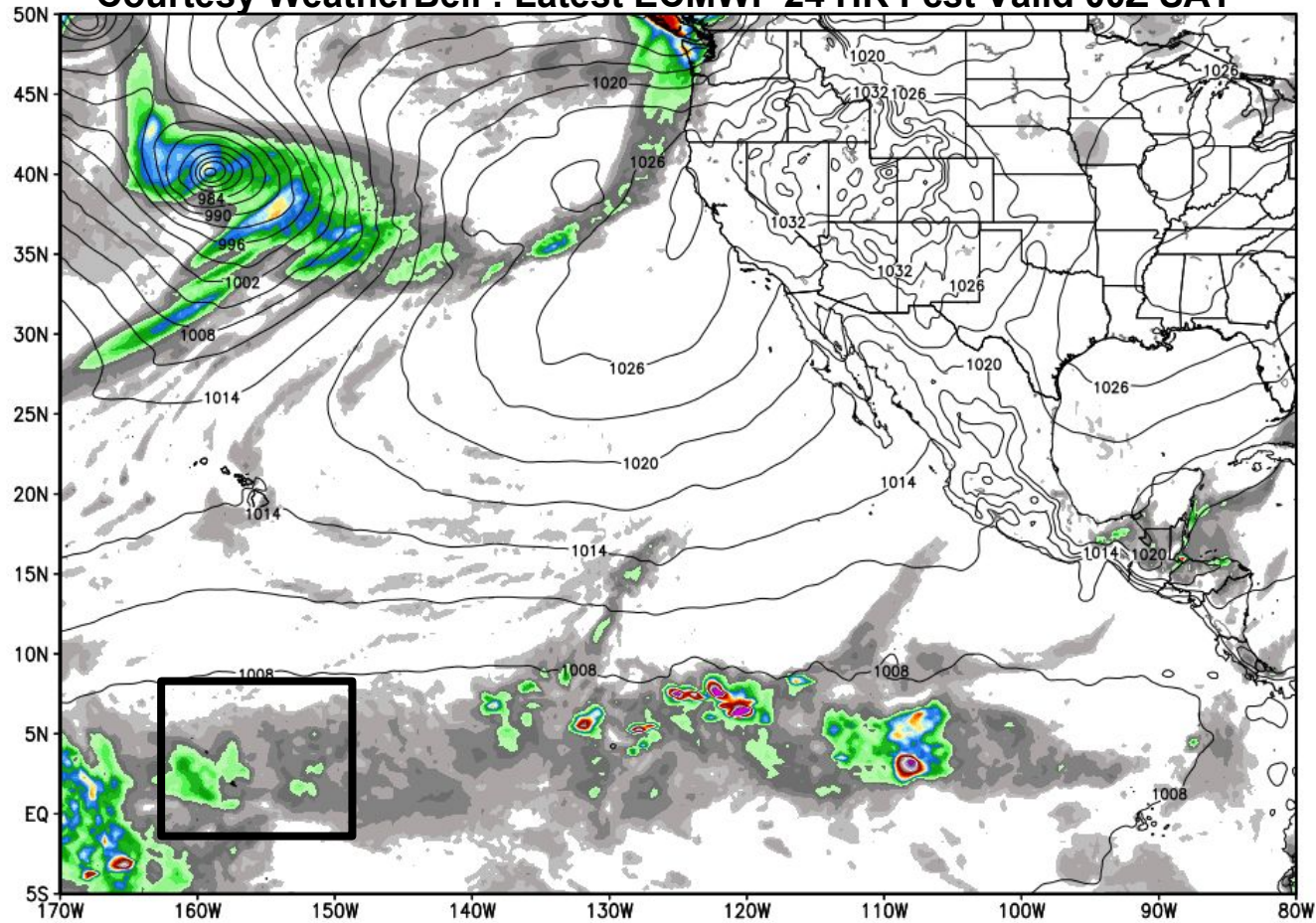
Levi Cowan | tropicaltidbits.com





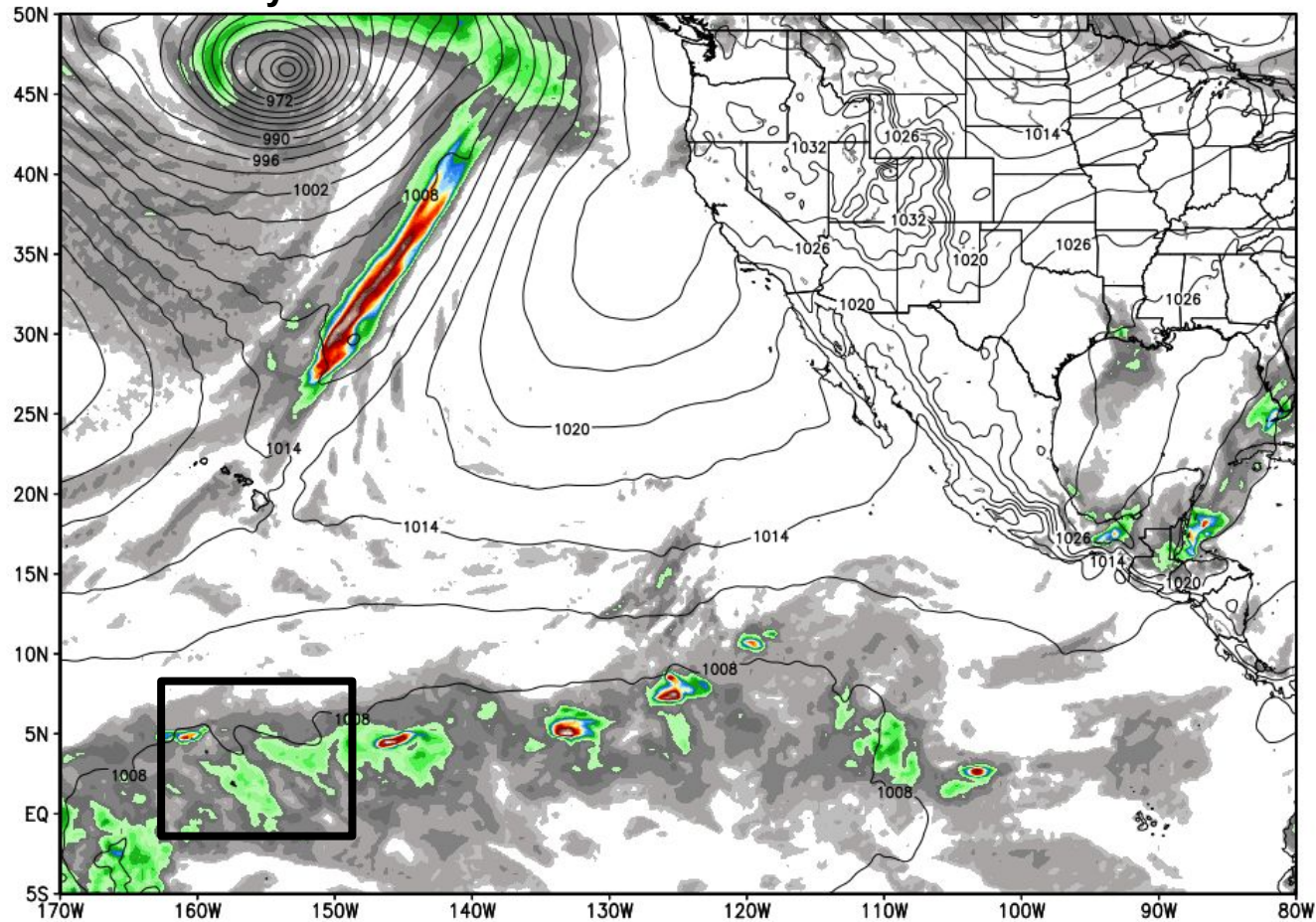
ECMWF 6-hourly Precipitation [inches] between 18Z05FEB2016 -- 00Z06FEB2016 & MSLP [hPa]  
INIT: 00Z05FEB2016 fx: [024] hr --> Sat 00Z06FEB2016

## Courtesy WeatherBell : Latest ECMWF 24 HR Fcst Valid 00Z SAT



ECMWF 6-hourly Precipitation [inches] between 18Z06FEB2016 -- 00Z07FEB2016 & MSLP [hPa]  
INIT: 00Z05FEB2016 fx: [048] hr --> Sun 00Z07FEB2016

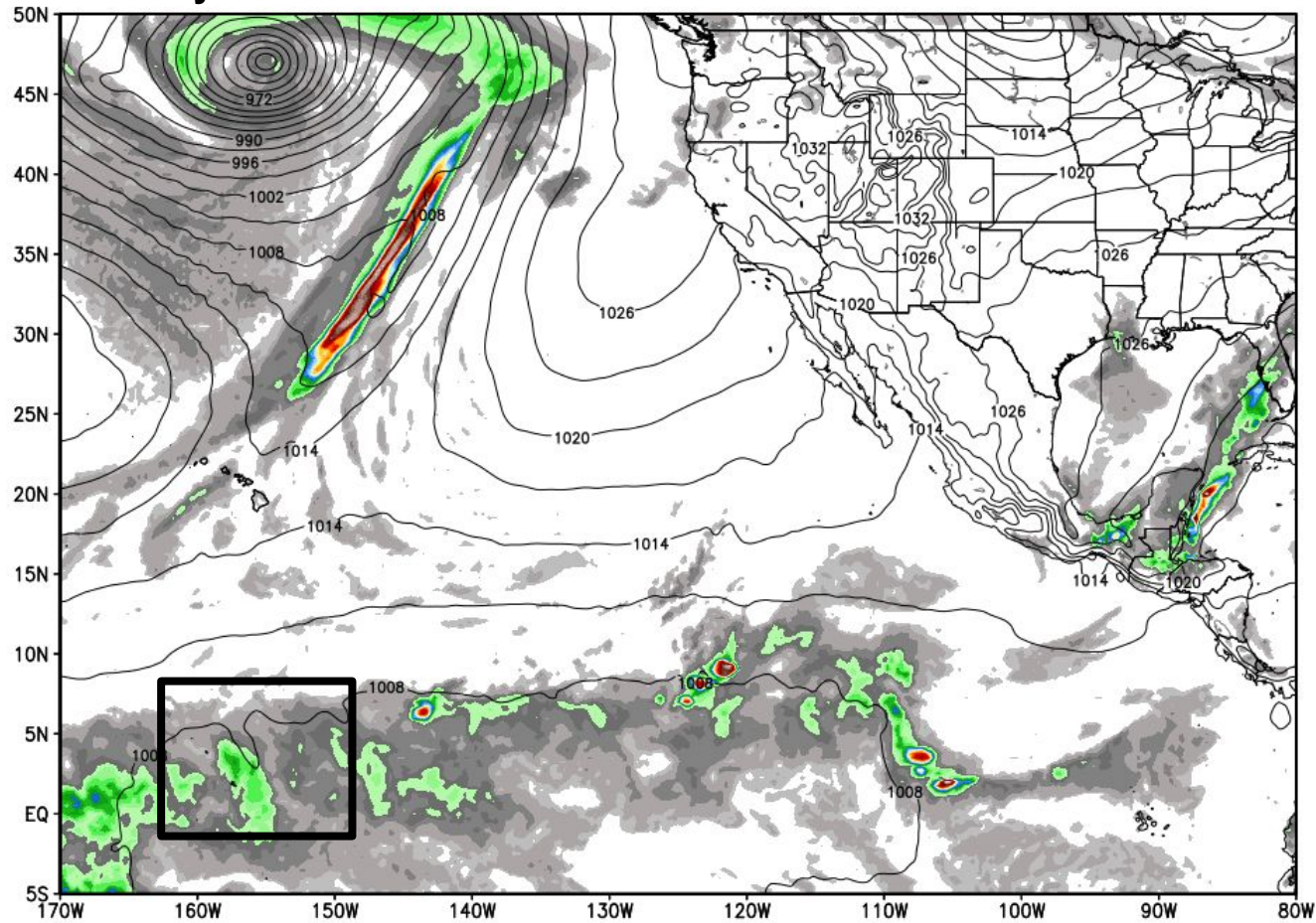
**Courtesy WeatherBell : Latest ECMWF 48 HR Fcst Valid 00Z SUN**





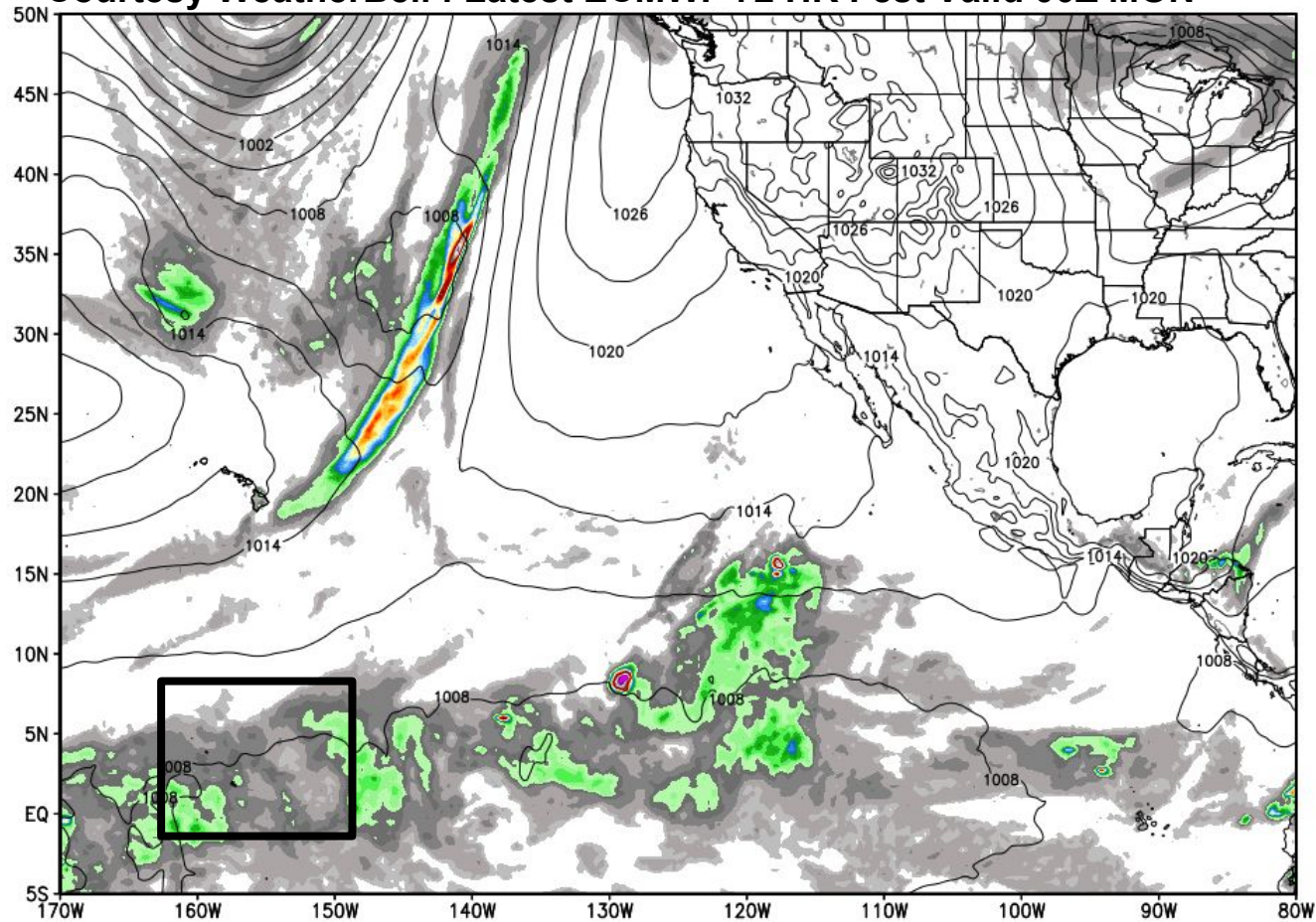
ECMWF 6-hourly Precipitation [inches] between 18Z06FEB2016 -- 00Z07FEB2016 & MSLP [hPa]  
INIT: 00Z04FEB2016 fx: [072] hr --> Sun 00Z07FEB2016

Courtesy WeatherBell : Prior ECMWF 72 HR Fcst Valid 00Z SUN



ECMWF 6-hourly Precipitation [inches] between 18Z07FEB2016 -- 00Z08FEB2016 & MSLP [hPa]  
INIT: 00Z05FEB2016 fx: [072] hr --> Mon 00Z08FEB2016

## Courtesy WeatherBell : Latest ECMWF 72 HR Fcst Valid 00Z MON

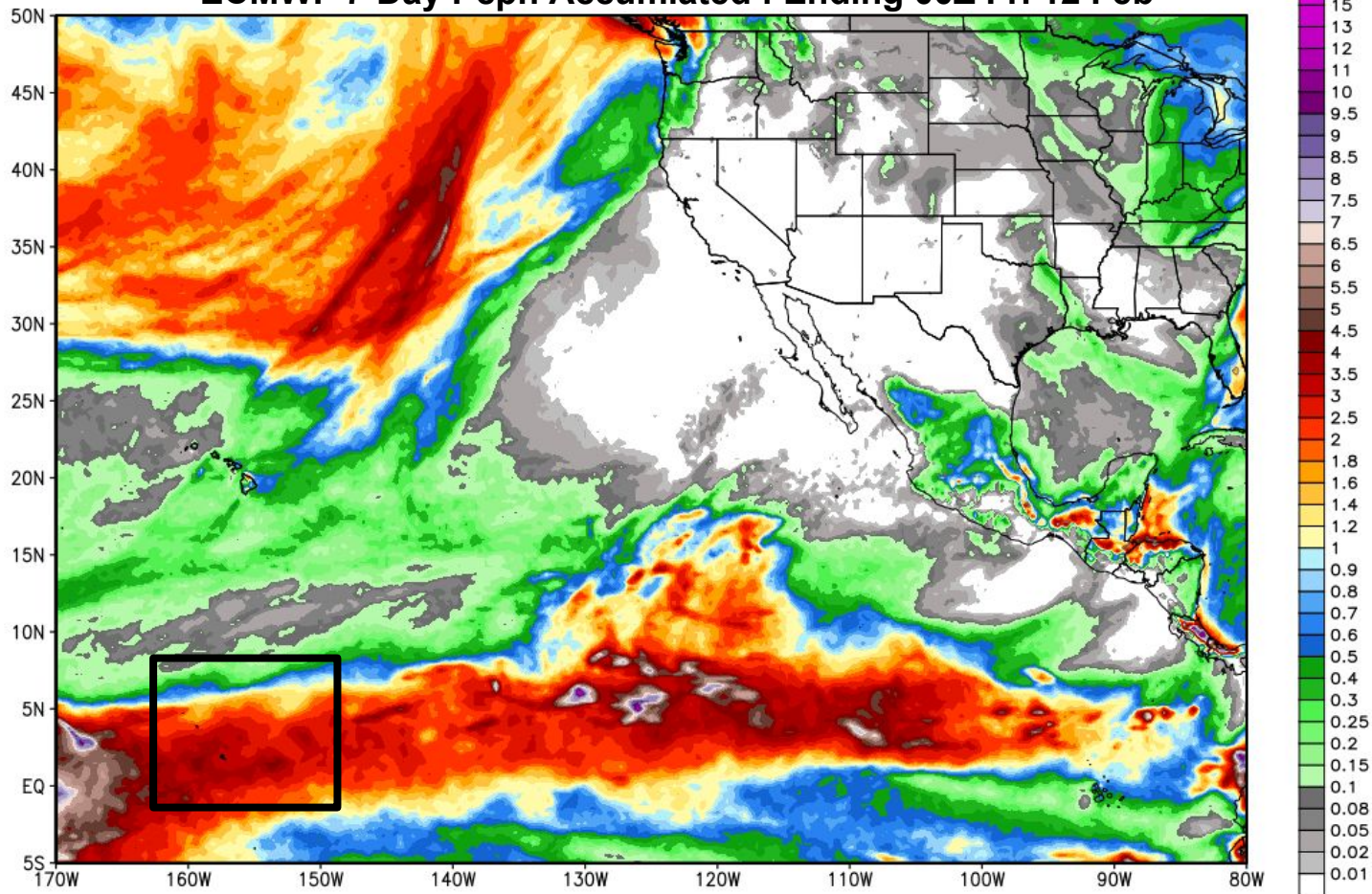




ECMWF Total Precipitation [inches] between 00Z05FEB2016 -- 00Z12FEB2016  
INIT: 00Z05FEB2016 fx: [168] hr --> Fri 00Z12FEB2016

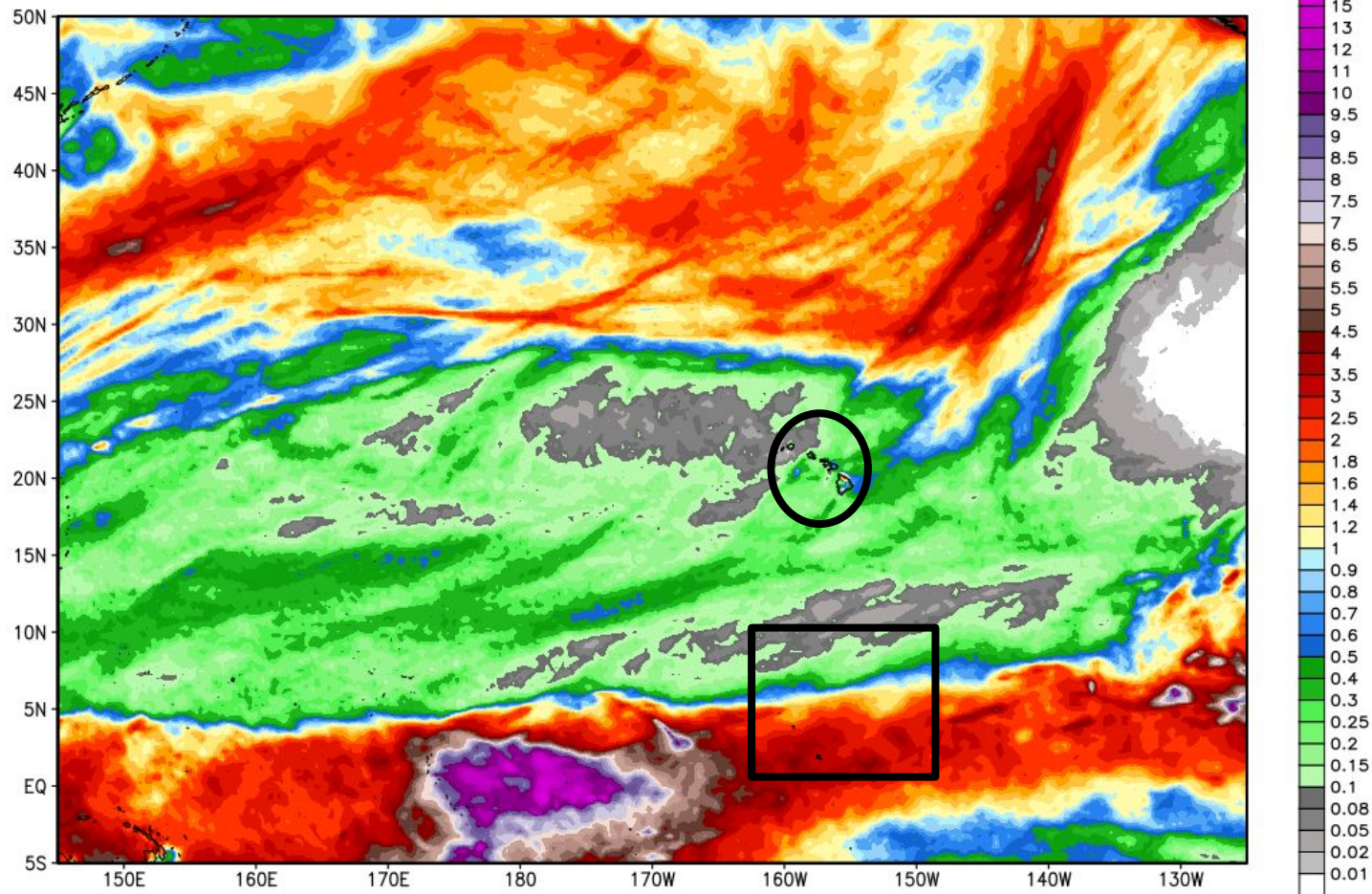
Max 13.9 in

## ECMWF 7-Day Pcpn Accumulated : Ending 00Z Fri 12 Feb



ECMWF Total Precipitation [inches] between 00Z05FEB2016 -- 00Z12FEB2016  
INIT: 00Z05FEB2016 fx: [168] hr --> Fri 00Z12FEB2016

Max 19.9 in

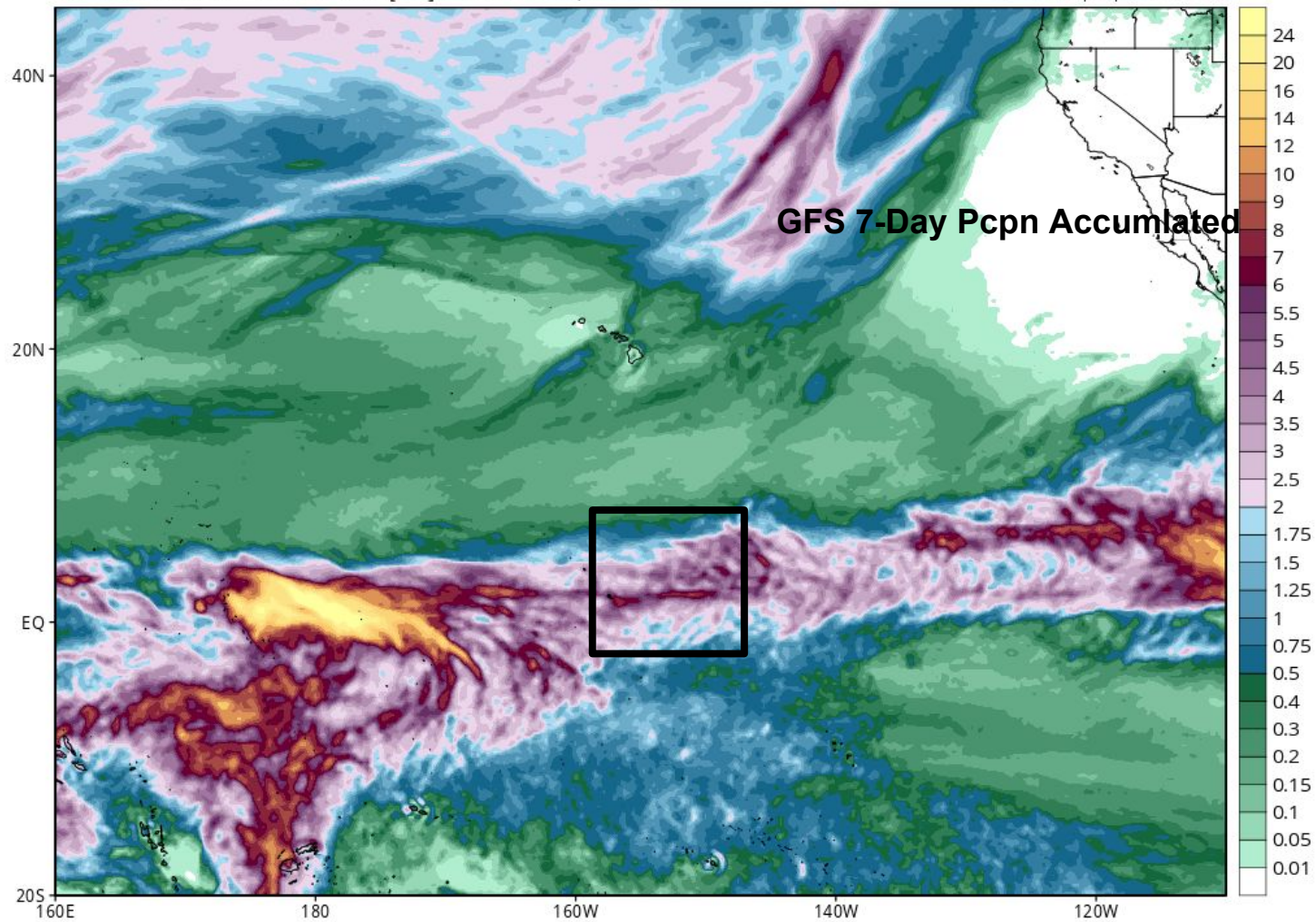




# GFS Total Accumulated Precipitation (inches) from 06z05Feb2016 to 00z12Feb2016

Init: 06z Feb 05 2016 Forecast Hour: [162] valid at 00z Fri, Feb 12 2016

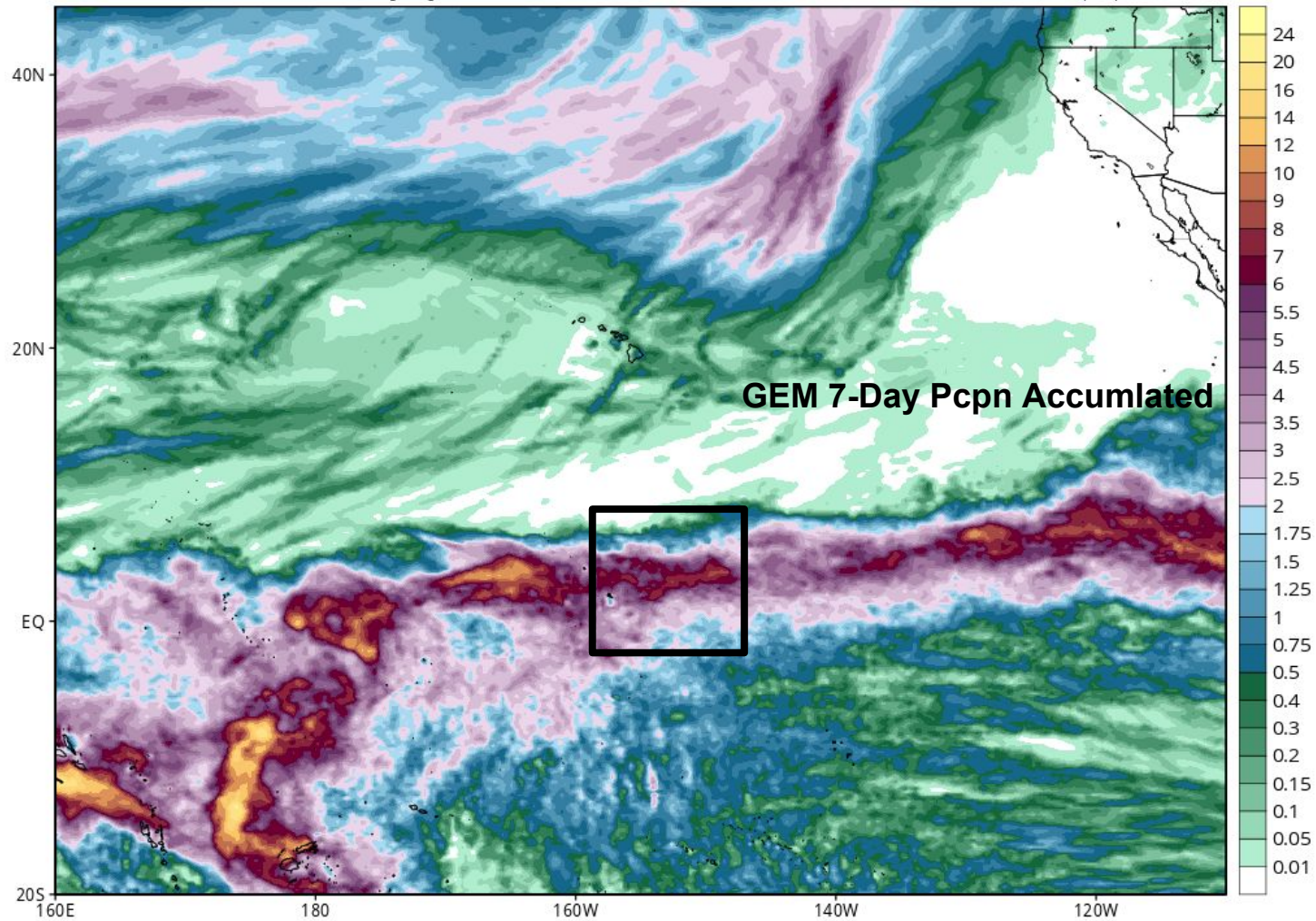
Levi Cowan | tropicaltidbits.com



# GEM Total Accumulated Precipitation (inches) from 00z05Feb2016 to 18z11Feb2016

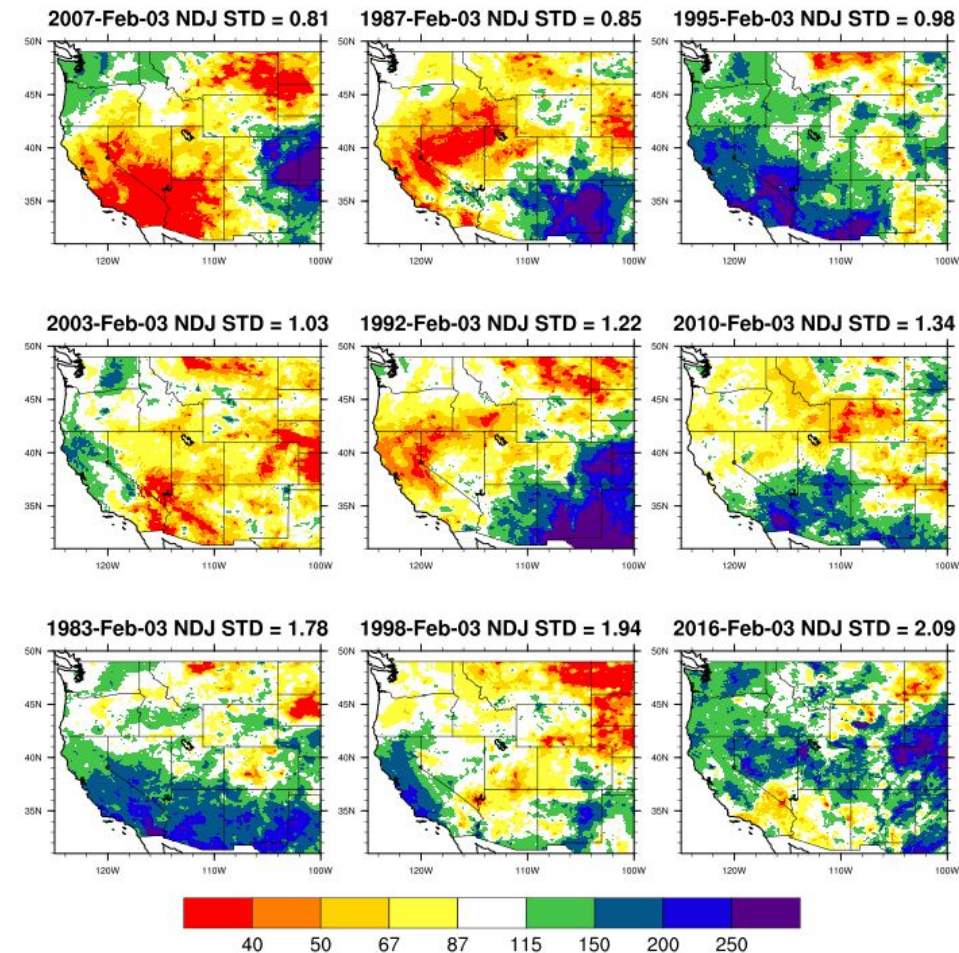
Init: 00z Feb 05 2016 Forecast Hour: [162] valid at 18z Thu, Feb 11 2016

Levi Cowan | tropicaltidbits.com





# FEB 03 Percent of Expected, Starting 1 Nov (Warmest Nov-Jan 3.4 SST)

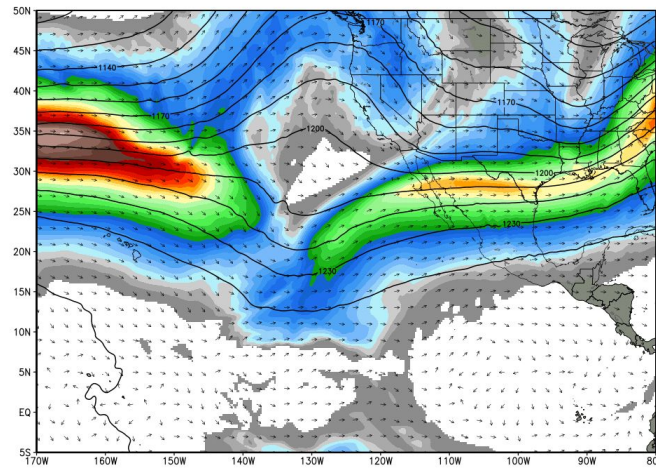


# 00Z FRi Feb 5

# 00Z MON Feb 8

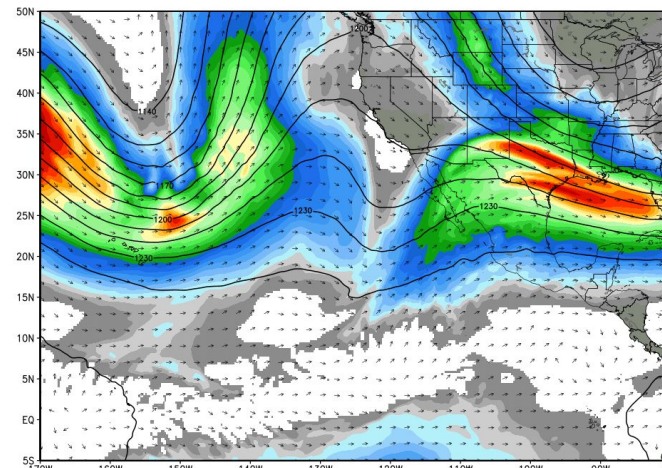
ECMWF 200 hPa Wind Speed & Vector Direction [knots], Height [dm]  
INIT: 00Z04FEB2016 fx: [024] hr --> Fri 00Z05FEB2016

Max Wind 175.4 knots



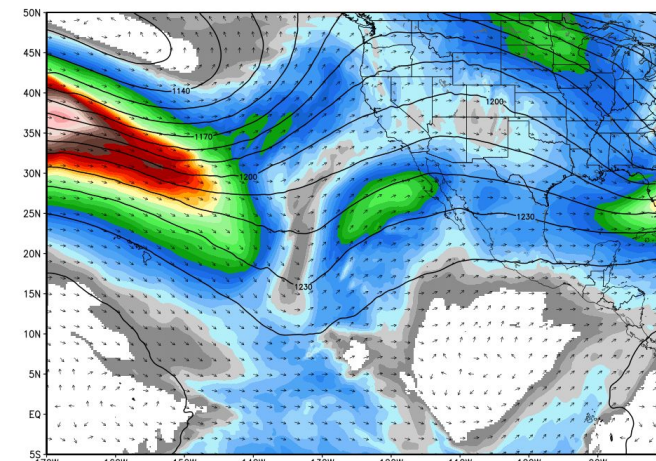
ECMWF 200 hPa Wind Speed & Vector Direction [knots], Height [dm]  
INIT: 00Z04FEB2016 fx: [096] hr --> Mon 00Z08FEB2016

Max Wind 148.6 knots



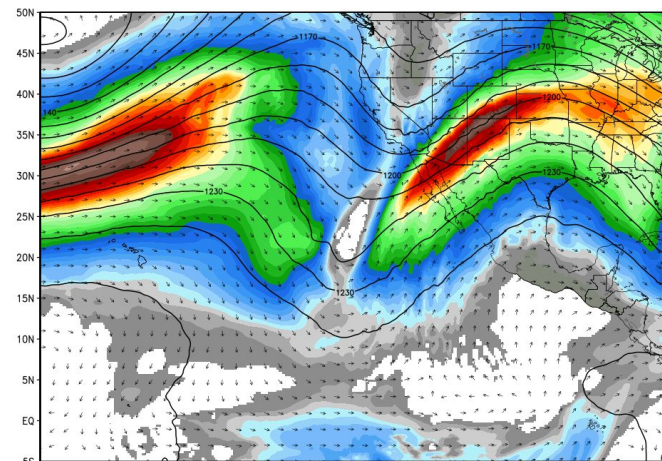
ECMWF 200 hPa Wind Speed & Vector Direction [knots], Height [dm]  
INIT: 00Z04FEB2016 fx: [168] hr --> Thu 00Z11FEB2016

Max Wind 175.4 knots



ECMWF 200 hPa Wind Speed & Vector Direction [knots], Height [dm]  
INIT: 00Z04FEB2016 fx: [240] hr --> Sun 00Z14FEB2016

Max Wind 175.4 knots

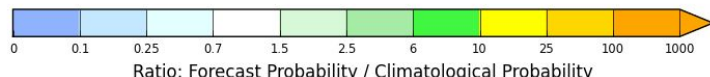
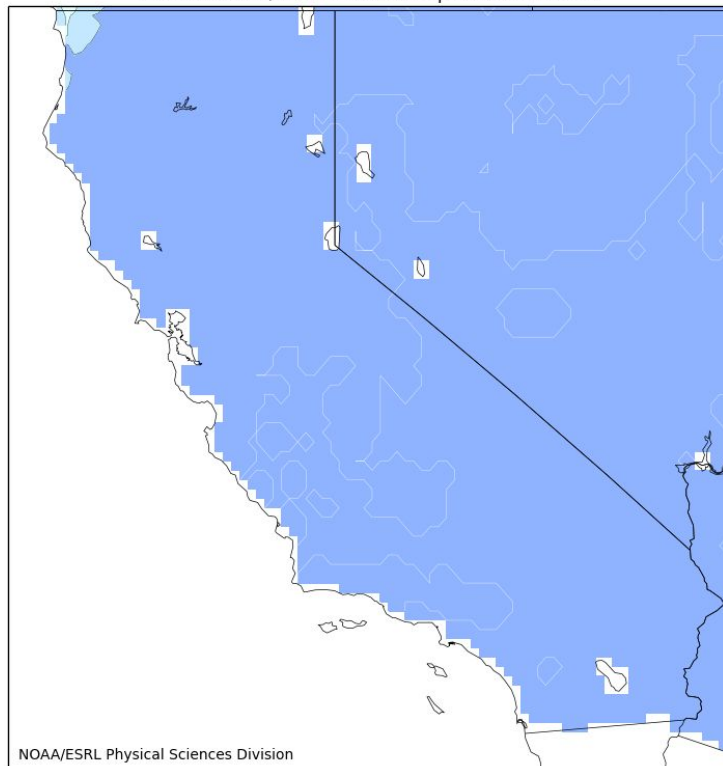




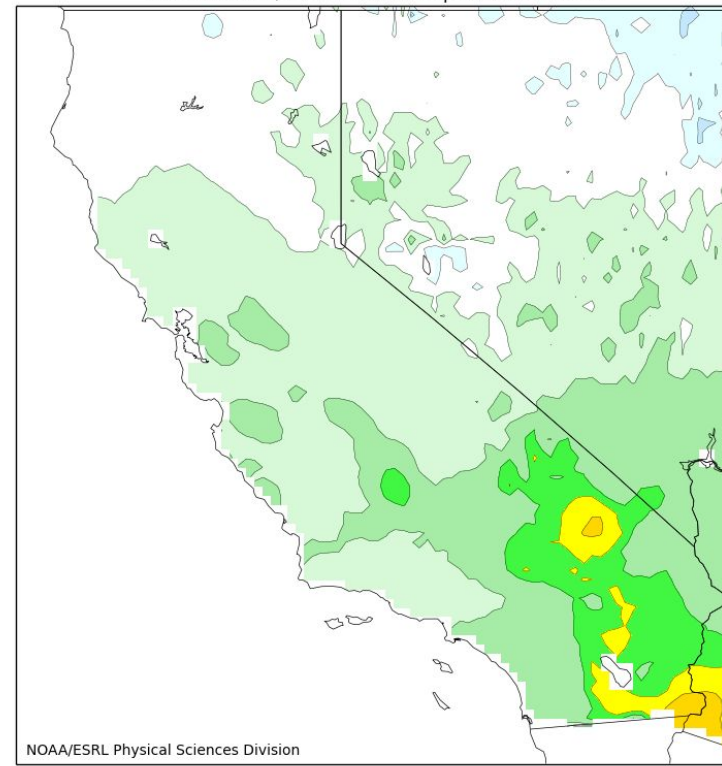
# Medium - Long Range Forecast

## ESRL-Calibrated Reforecast Pcpn : Day 0-7 and 8-15 Day Fcst (from the 00Z THU 4 FEB ensembles of the experimental reforecast system)

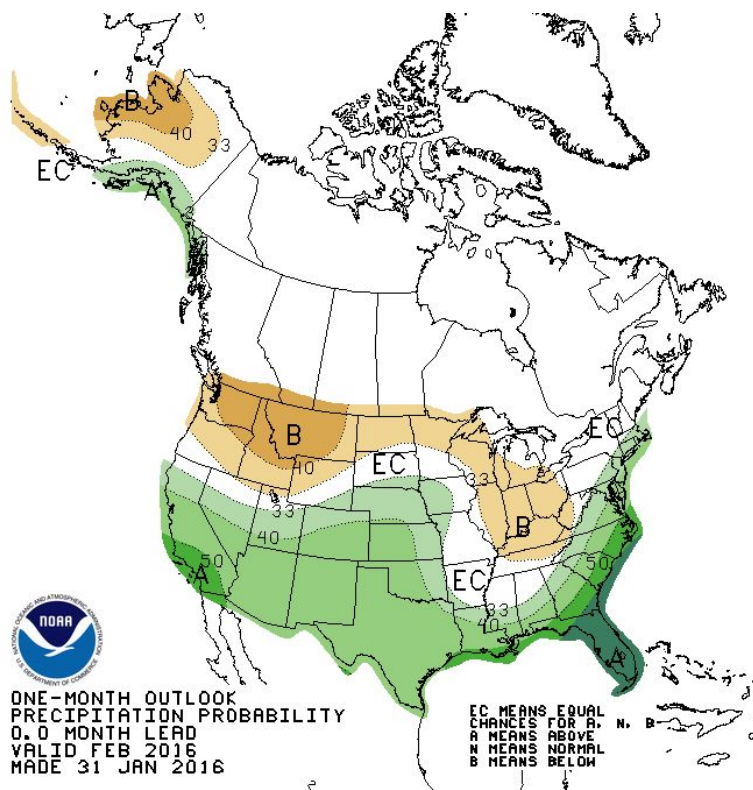
000-168hr fcst from 00Z Thu Feb 04. Valid 00Z Thu Feb 04 - 00Z Thu Feb 11  
Ratio. Forecast/Climo Prob of Precip > 50mm. CSGD.



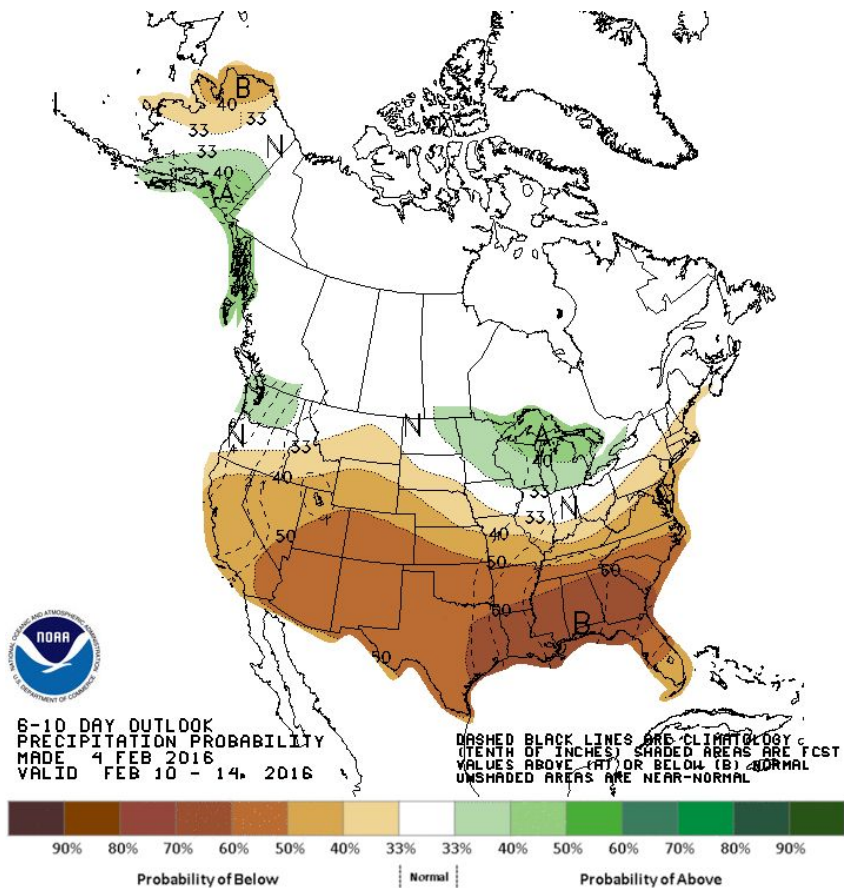
198-360hr fcst from 00Z Thu Feb 04. Valid 06Z Fri Feb 12 - 00Z Fri Feb 19  
Ratio. Forecast/Climo Prob of Precip > 50mm. CSGD.



## CPC February Outlook



## CPC 6-10 Day Fcst for 10-14 Feb





# Medium - Long Range Forecast

## Day 7-10 Initialized 00Z FRI 05 Feb

